

## UC Irvine

### Western Journal of Emergency Medicine: Integrating Emergency Care with Population Health

#### Title

Complex Thoracic Aortic Dissection

#### Permalink

<https://escholarship.org/uc/item/8v13h2sq>

#### Journal

Western Journal of Emergency Medicine: Integrating Emergency Care with Population Health, 15(6)

#### ISSN

1936-900X

#### Authors

Patel, Mihir  
Patel, Samir  
Moskowitz, Craig  
et al.

#### Publication Date

2014

#### DOI

10.5811/westjem.2014.7.22843

#### Copyright Information

Copyright 2014 by the author(s). This work is made available under the terms of a Creative Commons Attribution-NonCommercial License, available at <https://creativecommons.org/licenses/by-nc/4.0/>

Peer reviewed

## Complex Thoracic Aortic Dissection

Mihir Patel, MD\*  
 Samir Patel, MD†  
 Craig Moskowitz, MD\*  
 Brandon Chen, MD\*

\*Yale School of Medicine, St. Mary's Hospital, Department of Medicine, Waterbury, Connecticut

† Northside Medical Center, Department of Medicine, Youngstown, Ohio

Supervising Section Editor: Sean O. Henderson, MD

Submission history: Submitted June 10, 2014; Accepted July 7, 2014

Electronically published July 21, 2014

Full text available through open access at [http://escholarship.org/uc/uciem\\_westjem](http://escholarship.org/uc/uciem_westjem)

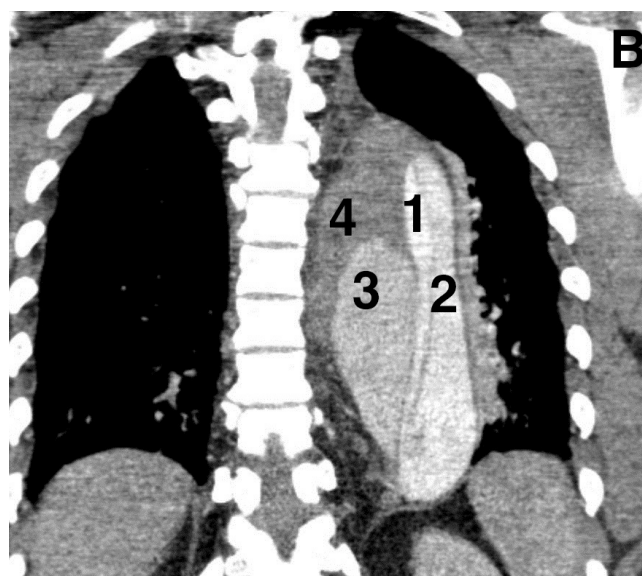
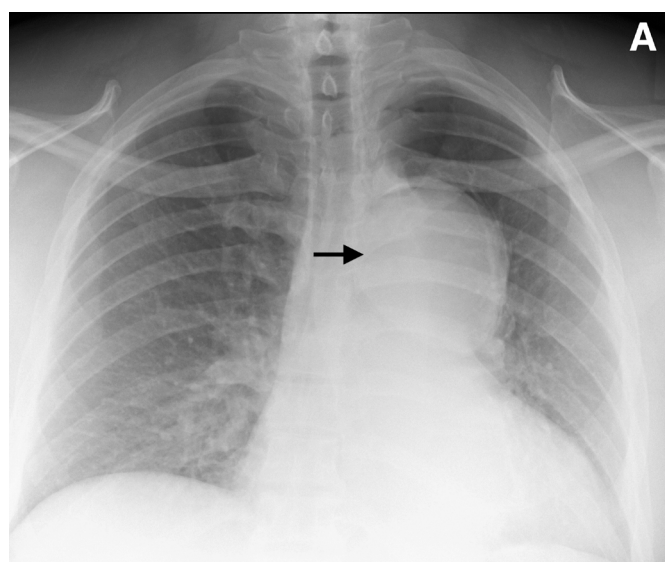
DOI: 10.5811/westjem.2014.7.22843

[West J Emerg Med. 2014;15(6):667-668]

A 50-year-old man presented with sudden onset abdominal pain and non-productive cough. Past medical history was significant for hypertension, treated with hydrochlorothiazide, azilsartan and a beta-blocker. Cardiovascular exam was notable for soft diastolic murmur in right second intercostal space and an abdominal bruit in umbilical region. A chest radiograph revealed a left mediastinal mass (Panel A, Arrowhead). Contrast enhanced computed tomography (CT) of the chest and abdomen revealed a Type 1A, complex thoracic aortic dissection originating at the aortic root (Panel B, four lumens: True lumen [1], acute dissection [2], Sub acute dissection [3] and chronic dissection [4] respectively). The dissection extended down to the mid iliac arteries bilaterally (Image not shown). The patient was transferred to tertiary care center and underwent an aortic root replacement.

CT is the most utilized imaging modality for the diagnosis of aortic dissection.<sup>1</sup> The advantages of CT are ready and widespread availability in the emergency department setting, rapid image acquisition, minimal patient discomfort, and sensitivity and specificity approaching 100% with multidetector CT.<sup>2</sup> A negative CT may also identify alternative causes for the patient's clinical presentation. Limitations of CT include false positives from motion artifact in non-electrocardiogram gated scans, false negatives from poor contrast opacification due to cardiac failure or thrombosed false lumen, and identification of intimal flap in only 70% of cases.<sup>3,4</sup>

Address for Correspondence: Mihir Patel, MD, Department of Medicine, St. Mary's Hospital, 56 Franklin St., Waterbury, CT, 06706. Email: [Dr.mihir84@hotmail.com](mailto:Dr.mihir84@hotmail.com).



**Figure.** A, Chest radiograph revealing a left mediastinal mass. B, Complex thoracic aortic dissection originating at aortic root. 1) true lumen 2) acute dissection 3) acute dissection 4) chronic dissection

**Conflicts of Interest:** By the WestJEM article submission agreement, all authors are required to disclose all affiliations, funding sources and financial or management relationships that could be perceived as potential sources of bias. The authors disclosed none.

## REFERENCES

1. Hagan PG, Nienaber CA, Isselbacher EM, et al. The International Registry of Acute Aortic Dissection (IRAD): new insights into an old disease. *JAMA*. 2000;283(7):897.
2. Hayter RG, Rhea JT, Small A, et al. Suspected aortic dissection and other aortic disorders: multi-detector row CT in 373 cases in the emergency setting. *Radiology*. 2006;238(3):841.
3. Vassile N, Mathieu D, Keita K, et al. Computed tomography of thoracic aortic dissection: accuracy and pitfalls. *J Comput Assist Tomogr*. 1986;10: 211-215.
4. McMahon MA, Squirrell CA. Multidetector CT of Aortic Dissection: A Pictorial Review. *Radiographics*. 2010;445-60.