

UC Davis

UC Davis Previously Published Works

Title

Comparative transcriptomics of tropical woody plants supports fast and furious strategy along the leaf economics spectrum in lianas

Permalink

<https://escholarship.org/uc/item/57f158qb>

Journal

Biology Open, 11(7)

ISSN

2046-6390

Authors

Sezen, U Uzay
Worthy, Samantha J
Umaña, Maria N
[et al.](#)

Publication Date

2022-07-15

DOI

10.1242/bio.059184

Peer reviewed

RESEARCH ARTICLE

Comparative transcriptomics of tropical woody plants supports fast and furious strategy along the leaf economics spectrum in lianas

U. Uzay Sezen^{1,*}, Samantha J. Worthy², Maria N. Umaña³, Stuart J. Davies^{4,5}, Sean M. McMahon¹ and Nathan G. Swenson^{2,6}

ABSTRACT

Lianas, climbing woody plants, influence the structure and function of tropical forests. Climbing traits have evolved multiple times, including ancestral groups such as gymnosperms and pteridophytes, but the genetic basis of the liana strategy is largely unknown. Here, we use a comparative transcriptomic approach for 47 tropical plant species, including ten lianas of diverse taxonomic origins, to identify genes that are consistently expressed or downregulated only in lianas. Our comparative analysis of full-length transcripts enabled the identification of a core interactomic network common to lianas. Sets of transcripts identified from our analysis reveal features related to functional traits pertinent to leaf economics spectrum in lianas, include upregulation of genes controlling epidermal cuticular properties, cell wall remodeling, carbon concentrating mechanism, cell cycle progression, DNA repair and a large suit of downregulated transcription factors and enzymes involved in ABA-mediated stress response as well as lignin and suberin synthesis. All together, these genes are known to be significant in shaping plant morphologies through responses such as gravitropism, phyllotaxy and shade avoidance.

KEY WORDS: Interactome, Leaf economics spectrum, Liana, Transcriptome

INTRODUCTION

Lianas are woody vines that have evolved multiple times since at least the Devonian period in vascular plant lineages, including in the Gnetales and repeatedly in the Angiosperms, with fascinating diversity in stem anatomy even within a single genus (Stein et al., 2012; Chery et al., 2020). The Neotropics carry close to 11,000 liana species belonging to 977 genera under 119 families (Gentry, 1992), while the Old-world tropics contain about 12,000 species found in 143 families and 1415 genera (Hu and Li, 2015). In tropical forests, lianas may account for as much as 25% of the woody plant

species but can also represent 40% of canopy leaf cover (Schnitzer and Bongers, 2002; Putz, 1984). As structural parasites, lianas affect host tree recruitment, growth, survival, and reproduction (Stevens, 1987; Ewers et al., 2015; Visser et al., 2018). Lianas also play significant roles in the cycling of carbon, nitrogen and water, and can hold back recovery after gap-forming events (Putz, 1984; Schnitzer et al., 2000, 2012; Barker and Pérez-Salícup, 2000; Schnitzer, 2005; Wright et al., 2005; Schnitzer and Carson, 2010; Andrade et al., 2005; Phillips et al., 2002). Despite their exceptional diversity and ecological importance, little is known about the genetic characteristics that distinguish them from other vascular plants that help explain their convergence.

The basic advantage of the liana life form is clear: lianas harvest light from the treetops without investing in the woody structures necessary to support a canopy of leaves (Darwin, 1865). Several trade-offs emerge from this strategy of structural parasitism that might provide a path toward understanding convergent liana phenotypes. Specifically, in order to gain access to the canopy, lianas need to balance leaf area, length of vascular tissues, and tolerance to high temperature, excess light and dehydration which suggest potential underlying genetic mechanisms towards a liana growth form in multiple plant families (Putz and Mooney, 1991; Zhang et al., 2019a). In the following, we consider each of these challenges to the liana lifestyle as a means of generating expectations regarding where similarities in gene expression profiles among a phylogenetically diverse set of lianas may exist. The liana life form involves a relatively longer stem length compared to that of trees culminating with a large total leaf area that sprawls over the crowns of many trees would make lianas more vulnerable to xylem vessel embolism than trees and shrubs (Santiago and Wright, 2007; Ichihashi and Tatenno, 2015). Liana leaves must have evolved adaptations that complement and compensate for hydraulic limitations and occupy a distinct range along the leaf economic spectrum (LES) (Wright et al., 2004; Osnas et al., 2013). Compared to trees, lianas tend to have thinner blades with higher specific leaf area (SLA) and nutrient content. The foliar chemistry of lianas and trees also form a contrast based on leaf mass and area (Asner and Martin, 2012). However, their leaves can also exhibit higher photosynthetic efficiencies despite the fact that the general leaf qualities reflect inexpensive, disposable, short longevity structures with little or no investment on defense (Mello et al., 2020).

The direct solar radiation and high heat in the canopies, where most liana leaves are deployed can impose significant constraints for lianas. For instance, the photosystem II has been shown to be vulnerable to temperature and light stress in a liana as compared to its tree relative (Zhang et al., 2019b). Canopy trees have the potential to mediate this damage through higher leaf area with thinner boundary layers for efficient cooling. There is evidence that liana leaves have lower leaf transmittance values, better for

¹Smithsonian Environmental Research Center, 647 Contees Wharf Rd, Edgewater, MD, 21037, USA. ²Department of Evolution and Ecology, University of California, Davis, CA, 95616 USA. ³Department of Ecology and Evolutionary Biology, University of Michigan, Ann Arbor, MI, 48109, USA. ⁴Forest Global Earth Observatory, Smithsonian Tropical Research Institute, Gamboa, Panama. ⁵Department of Botany, National Museum of Natural History, Smithsonian Institution, Washington DC, 20560, USA. ⁶Department of Biological Sciences, University of Notre Dame, Notre Dame, IN 46556, USA.

*Author for correspondence (uzay.sezen@gmail.com)

© U. U.S., 0000-0002-2988-8790; S.J.W., 0000-0003-0414-2607; S.J.D., 0000-0002-8596-7522; S.M.M., 0000-0001-8302-6908; N.G.S., 0000-0003-3819-9767

This is an Open Access article distributed under the terms of the Creative Commons Attribution License (<https://creativecommons.org/licenses/by/4.0>), which permits unrestricted use, distribution and reproduction in any medium provided that the original work is properly attributed.

light-capture, but worse for damage to tissues (Avalos et al., 1999; Zhang et al., 2019b). It is highly possible that lianas have evolved certain epicuticular and parenchymal properties that have a set upper limit for safe light harvest and deflect excessive photosynthetically active radiation. When leaf temperature exceeds photosynthetic optimum, CO₂ assimilation rates and stomatal conductance decrease while respiration increases (Guzmán Q. et al., 2018). Seasonal observations indicate that carbon fixation and efficiencies of water and nitrogen use are especially high in lianas during drought giving them a growth advantage (Cai et al., 2009; Schnitzer, 2018; Medina-Vega et al., 2021). We, therefore, expect that leaf surface qualities and mesophyll properties should be under selective pressures for dealing with light, thermal and dehydration stress. Guard cell openings can be set to maintain a steady rate of water loss enough to last through the day and from *Vitis vinifera* (grapevine from here in) we know that lianas can employ a range of anisohydric and isohydric control of stomatal conductance as water use strategy. Through their cheap but efficient leaves, lianas may also be carrying out sufficient levels of photosynthesis rapidly before midday to escape from the sun's pernicious rays.

There has been some research on stress responses of a few liana species (Gioppato et al., 2019; Hung et al., 2020). However, most of the information comes from grapevine due to the large amount of genomic and transcriptomic information generated for the species (Jaillon et al., 2007; Wen et al., 2013; Chitwood et al., 2014; Dayer et al., 2019; Daldoul et al., 2020). A lack of high throughput sequencing data for additional liana species has reduced our ability to explore their potential genetic commonalities that distinguish them from non-liana plants.

Here, we provide a comparative transcriptomic analysis across a phylogenetically diverse group of trees, shrubs, and lianas. We use reference transcriptome assemblies of 37 tree and shrub species and ten liana species (Fig. S1, Dataset S1). Using network analyses, we ask the following questions: (1) what genes are uniquely expressed and downregulated in some or all of the lianas? (2) Are there unique genetic similarities among lianas related to their shared ecological challenges (e.g. long distance nutrient transport, stress including hydraulic, thermal and light, leaf tissue quality, unidirectional growth and light sensing)? And (3) are there unique genetic similarities in lianas that reflect specific metabolic pathways underpinning the building of structural biomass?

RESULTS

Transcriptome assembly, annotation and trait comparison

Using a phylogenetically diverse sample of ten liana species, we identified major convergent gene expression patterns that contrast with 37 coexisting species of trees and shrubs (Figs S1, S3). Quality metrics of transcriptomes generated by Quality Assessment Tools for Genome Assemblies (QUAST) showed the transcriptomes range in size from 49,040 (*Tetragastris balsamifera*) to 182,060 (*Ixora ferrea*) (Dryad repository). The overall alignment rates for the *de novo* assembled reference transcriptomes, validated by Bowtie2 alignments of trimmed and quality filtered reads, were between 83 and 94% (Fig. S2A). The assembled transcriptomes captured an informative fraction of the expressed genes from 47 species where Benchmarking Universal Single-Copy Orthologs (BUSCO) analyses were able to represent between 52 and 92% of the benchmark eukaryotic genes within the Embryophyta (Fig. S2B, Dataset S1). Annotation and filtering of non-plant transcripts through EnTAP (Eukaryotic non-model Transcriptome Annotation Pipeline) resulted in a full-length set of grapevine orthologs ranging from 6001 (*Smilax coriacea*) to 9488 (*Dolichandra unguis-cati*) for

Table 1. Ortholog numbers, families, and growth forms of species with full-length transcripts BLASTed onto grapevine protein models

Species	Family	Form	Orthologs
<i>Dioscorea polygonoides</i>	Dioscoreaceae	Herbaceous	7289
<i>Dolichandra unguis-cati</i>	Bignoniaceae	Woody	9488
<i>Gnetum montanum</i>	Gnetaceae	Woody	7591
<i>Heteropterys laurifolia</i>	Malpighiaceae	Woody	7764
<i>Paullinia pinnata</i>	Sapindaceae	Woody	8275
<i>Passiflora caerulea</i>	Passifloraceae	Herbaceous	7237
<i>Schlegelia parasitica</i>	Schlegeliaceae	Herbaceous	8827
<i>Securidaca virgata</i>	Polygonaceae	Woody	8591
<i>Smilax coriacea</i>	Smilacaceae	Woody	6002
<i>Smilax sieboldii</i>	Smilacaceae	Woody	8141
Non-liana	–	–	13267
Overall	–	–	18,806

cross-comparison (Table 1, Dataset S1). An ordination of key LES traits, leaf area (LA) and specific leaf area (SLA), reflected difference between lianas and non-lianas in our transcriptome set, indicating a phenotypic portrayal of liana biology at a local island scale (Fig. S4).

A protein–protein interactome overlaid upon transcriptomic base layer

A Venn diagram of grapevine protein orthologs corresponding to our transcripts revealed 827 protein models common to all 47 plant species (Dataset S1). After the exclusion of common proteins, a protein–protein interactome network based on curated STRING database was constructed using transcripts exclusively expressed by lianas and non-lianas. The total size of the network including vertices with first and second shells of interaction consisted of 3835 nodes and 14,574 edges. Grapevine has 33,568 protein-coding genes and the network occupies a little over 11% of its gene space. Close to half of the network (1687 nodes) comprised genes solely expressed by non-lianas (Fig. 1). The rest included transcripts exclusively expressed by one or more lianas (Fig. 1A). The most connected node (VIT_11s0016g03430) with 199 interactions represented the core of the interactome corresponded to a protein phosphatase 2C (PP2C) also known as cyclic nucleotide-binding/kinase domain-containing protein (Fig. S3). This protein-serine/threonine phosphatase is a key enzyme in cGMP-dependent signaling, abscisic acid perception, commitment to cell cycle and is found within the additional shells of interaction in a region of the network subtending nodes exclusively expressed in lianas (Fig. 1; Table 2; Fig. S3). The subsequent highly connected nodes are all found within the co-downregulated portion of the network (Fig. 1B; Table 2).

Transcripts exclusively expressed in lianas

The transcripts expressed exclusively by more than one liana (L2–L5) species generated a network of 705 nodes with 1609 edges (Fig. 1; Fig. S3). We found no genes that are unanimously expressed by all lianas. Two nodes, shared by five lianas (L5), corresponded to the ethylene responsive transcription factor SHINE2 (SHN2) and the xyloglucan glycosyltransferase 4/cellulose synthase-like C family 4 (CSLC4) enzyme, representing the highest points of convergence via individual gene transcripts (Table 2). The next set of most nodes shared by four lianas (L4) in different combinations included cell wall remodeling enzymes pectin methylesterase 7 (PME7), glycosyl transferase (GT), polygalacturonase inhibitor-like (PGIP) as well as a carbon concentrating enzyme alpha carbonic anhydrase 4 (α -CAH4), and the plant-specific cell cycle regulator F-box-like 17 (FBL17) (Table 2; Fig. S3).

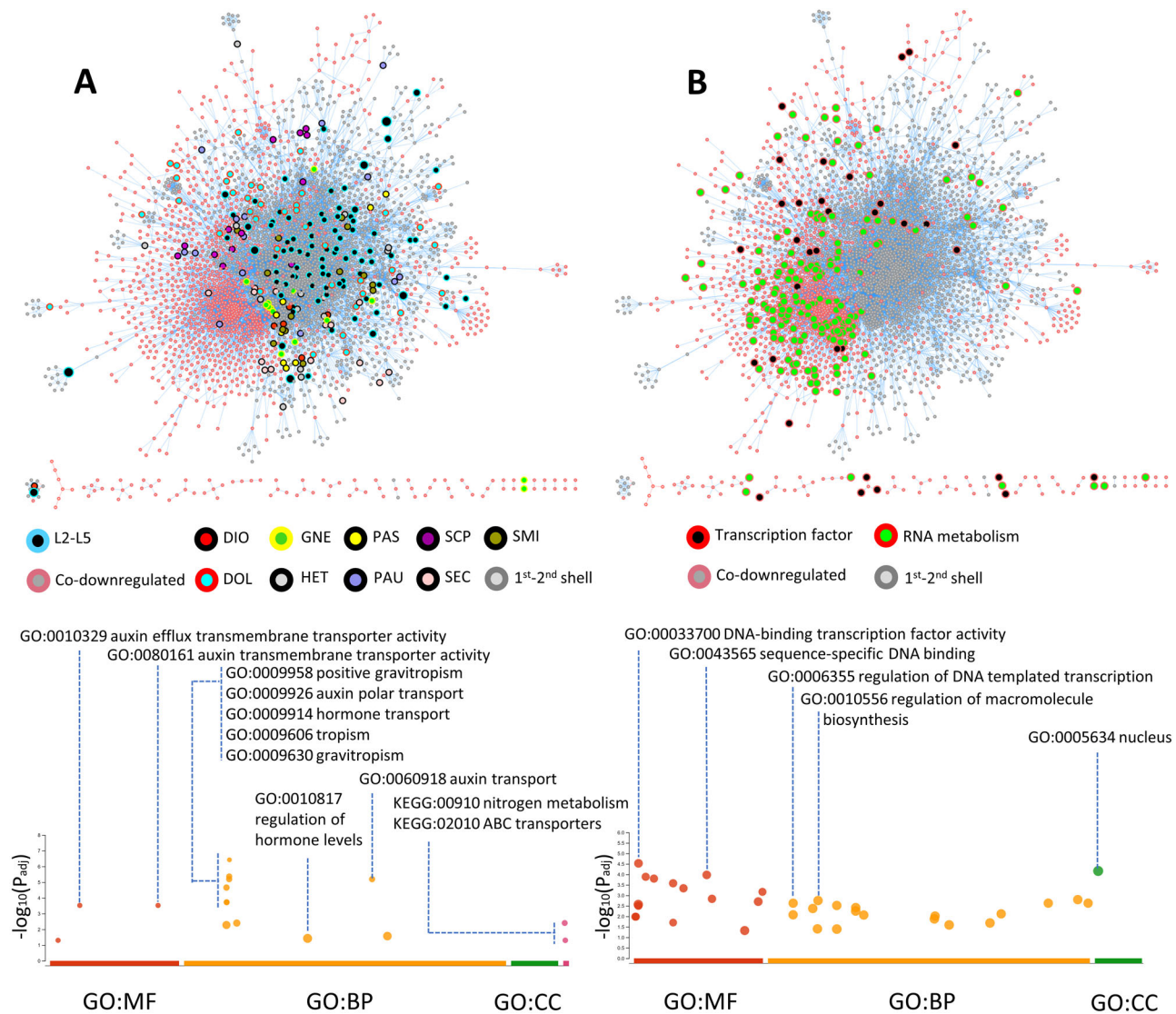


Fig. 1. Protein orthologs of full-length liana and non-liana transcripts mapped onto grapevine interactome and Manhattan plots of enriched GO terms. (A) Protein–protein interactions of transcripts solely expressed in ten lianas (the two *Smilax* species are represented as combined into SMI). Nodes shared by more than two lianas (L2–L5) and co-downregulated transcripts (salmon-colored borders) including their first shell interactors (gray colored borders) occupy distinctly sectorized footprints. GO terms represented molecular functions (MF) pertaining to the phytohormone auxin, biological processes (BP) including positive gravitropism and auxin transport. KEGG pathways included nitrogen metabolism and ABC transporters. No enrichment observed in cellular compartment (CC). (B) Nodes pertaining to mRNA metabolism (red border and green fill) and transcription factors (red border and black fill) are observed to be downregulated in all lianas in the dataset. GO term analysis of co-downregulated transcripts revealed terms such as regulation of gene expression concentrated around transcription factors. Molecular functions were enriched in DNA-binding transcription factor activity and sequence-specific DNA binding. Enriched biological processes included regulation of DNA templated transcription and regulation of macromolecule biosynthesis all localized to the nucleus.

The combined controlled vocabulary gene ontology (GO) analysis of transcripts shared by more than two lianas (L2–L5) through gProfiler displayed enriched molecular functions pertaining to the phytohormone auxin, such as auxin efflux transmembrane transporter activity (GO:0010329) and auxin transmembrane transporter activity (GO:0080161) (Fig. 1A). Biological processes included auxin associated activities such as positive gravitropism (GO:0009958), auxin polar transport (GO:0009926), hormone transport (GO:0009914), auxin transport (GO:0060918), tropism (GO:0009606), response to gravity (GO:0009629), gravitropism (GO:0009630) and regulation of hormone levels (GO:0010817) (Fig. 1A). Enriched Kyoto Encyclopedia of Genes and Genomes (KEGG) pathways included nitrogen metabolism (KEGG:00910) and ABC transporters (KEGG:02010) (Fig. 1A).

The term auxin and gravitropic response identified by gProfiler were consolidated around five genes including chaperone protein dnaJ 15-like (VIT_01S0011G03790), ABC transporter B family member 1 (VIT_08S0007G05060), protein kinase PINOID-like (VIT_10S0003G04320), auxin efflux carrier component (VIT_11S0052G00440), SEC7 domain-containing protein (VIT_02S0012G01790), and auxin efflux carrier component (VIT_14S0108G00020) (Dataset S1).

Transcripts not expressed in lianas

Comparative analysis revealed 2684 grapevine orthologs that were not expressed in our liana transcriptome set (Dataset S1). Of these, 1687 had hits in the STRING interactome database (Fig. 1). The co-downregulated transcripts (i.e. transcripts that probably have a

Table 2. Description of nodes of interest including transcripts exclusively expressed by more than one liana species (L2–L5), most connected nodes, and transcription factors (TFs) found within the co-downregulated portion of the protein–protein interactome network

Top nodes exclusive to lianas		
Liana spp.	Transcript ID	Annotation
L5	VIT_04s0008g05440.t01	ethylene-responsive transcription factor SHN2
L5	VIT_14s0066g01730.t01	xyloglucan glycosyltransferase 4/CSLC4
L4	VIT_03s0038g00680.t01	probable glycosyltransferase GT
L4	VIT_07s0005g00720.t01	pectinesterase/pectinesterase inhibitor 7 PME7
L4	VIT_13s0064g01370.t01	polygalacturonase inhibitor-like PGIP
L4	VIT_00s0252g00120.t01	alpha carbonic anhydrase 4 α -CAH4
L4	VIT_07s0141g00330.t01	F-Box/LRR-repeat protein 17 FBL17
Most connected nodes		
Number of edges	Transcript ID	Annotation
199	VIT_11s0016g03430.t01	protein phosphatase 2C PP2C
91	VIT_16s0013g00940.t01	kinetochore protein ndc80
86	VIT_07s0005g01430.t01	DNA replication licensing factor MCM7
80	VIT_16s0022g01590.t01	40S ribosomal protein S13
76	VIT_18s0001g03680.t01	serine/threonine-protein kinase mph1
64	VIT_00s1404g00010.t01	abnormal spindle-like microcephaly-associated protein homolog
63	VIT_12s0035g01130.t01	elongation factor 1-gamma
61	VIT_08s0007g03030.t01	ubiquitin-60S ribosomal protein L40-like
59	VIT_10s0003g03080.t01	DNA replication licensing factor MCM3 homolog 2
53	VIT_10s0003g00010.t01	30S ribosomal protein S5, chloroplast
Downregulated TFs		
Gene family	Transcript ID	Annotation
MYB-R2R3	VIT_01s0010g00410.t01	MYB308, MYB-related protein 308
MYB-R2R3	VIT_18s0117g00200.t01	MYB308, MYB-related protein 308
MYB-R2R3	VIT_04s0008g01800.t01	MYB308, MYB-related protein 308
MYB-R2R3	VIT_01s0011g04760.t01	R2R3 MYB transcription factor C2 repressor motif protein MYBC2-L1
MYB-R2R3	VIT_02s0025g00320.t01	MYB86, transcription factor MYB86
MYB-R2R3	VIT_02s0033g00410.t01	MYBA1, transcription factor MybA
MYB-R2R3	VIT_04s0008g00620.t01	MYB37, regulator of axillary meristems RAX1
MYB-R2R3	VIT_04s0008g01830.t01	MYB305, MYB-related protein 305
MYB-R2R3	VIT_06s0004g02110.t01	MYB46, transcription factor MYB46
MYB-R2R3	VIT_06s0004g06280.t01	MYB4, transcription factor MYB4
MYB-R2R3	VIT_08s0056g01190.t01	MYB44, transcription factor MYB44
MYB-R2R3	VIT_09s0002g01380.t01	MYB114, transcription factor MYB114
MYB-R2R3	VIT_09s0002g01400.t01	MYB38, regulator of axial meristems RAX2
MYB-R2R3	VIT_11s0016g02780.t01	MYB36, transcription factor MYB36
MYB-R2R3	VIT_11s0052g01490.t01	MYB36, transcription factor MYB36
MYB-R2R3	VIT_11s0078g00480.t01	MYB4, transcription factor MYB4
MYB-R2R3	VIT_12s0059g00700.t01	GAMYB, transcription factor GAMYB
MYB-R2R3	VIT_13s0067g01360.t01	myb-related protein B
MYB-R2R3	VIT_14s0006g01280.t01	MYB75, transcription factor MYB75
MYB-R2R3	VIT_15s0021g02040.t01	MYB48, transcription factor MYB48
MYB-R2R3	VIT_16s0050g00070.t01	MYB6, transcription repressor MYB6
MYB-R2R3	VIT_17s0000g06410.t01	transcription factor MYB34
MYB-R2R3	VIT_17s0000g08480.t01	MYB-WER, transcription factor MYB-WEREWOLF
MYB-R2R3	VIT_17s0000g08550.t01	MYB98, transcription factor MYB98
MYB-R2R3	VIT_18s0001g05670.t01	MYB39, transcription factor MYB39
MYB-R2R3	VIT_18s0001g15260.t01	MYB-GL1, transcription factor MYB-GL1
MYB-R2R3	VIT_19s0085g00940.t01	MYB26, transcription factor MYB26
MYB	VIT_14s0219g00050.t01	MYB315, myb-related protein 315-like
MYB	VIT_15s0048g02120.t01	transcriptional activator Myb
MYB-TT2	VIT_11s0016g01300.t01	MYB-TT2, MYBPAR, transcription factor MYB
MYB-3R4	VIT_02s0025g04220.t01	MYB transcription factor
MYB-SNAP	VIT_17s0000g02730.t01	MYB-SNAP, snRNA-activating protein complex subunit 4
MADS Box	VIT_03s0088g00590.t01	agamous-like MADS-box protein AGL62
MADS Box	VIT_03s0088g00610.t01	agamous-like MADS-box protein AGL62
MADS Box	VIT_14s0060g00300.t01	agamous-like MADS-box protein AGL80
BLH	VIT_08s0105g00230.t01	BEL1-like homeodomain protein 1
BLH	VIT_13s0019g02450.t01	BEL1-like homeodomain protein 9
HSF	VIT_10s0597g00050.t01	heat stress transcription factor B-2a
HSF	VIT_16s0100g00720.t01	heat stress transcription factor B-2a
NFY	VIT_02s0025g03770.t01	nuclear transcription factor Y subunit C-3
NFY	VIT_05s0020g02790.t01	nuclear transcription factor Y subunit C-3
ILP1	VIT_01s0011g02980.t01	ILP1, negative regulation of transcription by RNA PolII
DEM	VIT_04s0069g01060.t01	[histone H3]-dimethyl-L-lysine9 demethylase

Continued

Table 2. Continued

Top nodes exclusive to lianas		
Gene family	Transcript ID	Annotation
DREB	VIT_08s0007g08150.t01	DREB 2F
TF	VIT_06s0061g00820.t01	RNA polymerase II regulatory region DNA binding
TF	VIT_08s0007g04490.t01	PHD-type domain-containing protein
TF	VIT_11s0016g02020.t01	zinc finger CCCH domain-containing protein 65
TF	VIT_11s0016g03750.t01	SPEAR3
TF	VIT_14s0006g02730.t01	zinc finger protein 6

corresponding gene copy in the liana genomes but were not detected in our set of liana transcripts) enveloped a large portion of the network with 3751 edges. GO term analysis through gProfiler revealed terms pertaining to regulation of gene expression highly concentrated around transcription factors. Molecular functions were enriched in DNA-binding transcription factor activity (GO:0003700) and sequence-specific DNA binding (GO:0043565). Enriched biological processes included regulation of DNA templated transcription (GO:0006355) and regulation of macromolecule biosynthesis (GO:0010556), which are localized to the nucleus (GO:0005634) (Fig. 1B). Transcription factors such as nuclear factor Y (NFY), agamous-like (AGL), dehydration responsive element binding (DREB), BEL-like homeodomain (BLH), and myeloblastosis (MYB) showed significant presence in the co-downregulated sector of the interactome. The largest group of transcription factors consisted of MYB family represented by 32 members where 27 of them belonged to MYB-R2R3 sub-family

(Table 2). The co-downregulated portion of the interactome is comprised of nodes pertaining to mRNA metabolism (Fig. 1B).

Comparison of three families having liana and non-liana pairs

Three families belonging to Bignoniaceae, Sapindaceae, and Malpighiaceae included pairs of liana and non-liana members in our dataset. We scrutinized these with the anticipation of detecting the most informative gene expression differences (Fig. 2). Enrichment analysis for transcripts expressed only in the liana members resulted in five GO terms and a single KEGG pathway shared between Bignoniaceae and Sapindaceae. These shared terms are involved in developmental process during reproduction (GO:0003006), system development (GO:0048731), intracellular anatomical structure (GO:0005622), chloroplast (GO:0009507), plastid (GO:0009536), and biosynthesis of cofactors (KEGG:01240) (Fig. 2). Terms enriched in Malpighiaceae did not show any overlap with the other two families (Dataset S1).

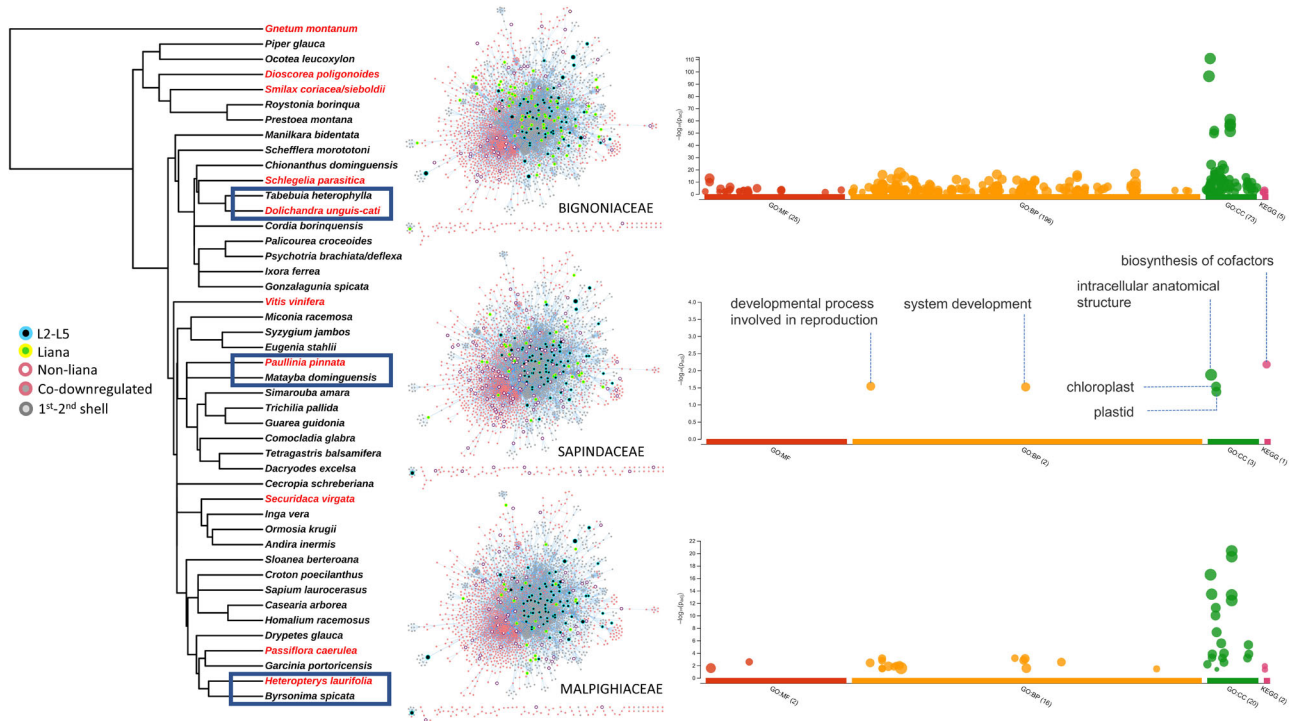


Fig. 2. Phylogenetic placement of lianas and non-lianas together with interactome and GO term enrichment of three families bearing liana and non-liana pairs: *Dolichandra unguis-cati* versus *Tabebuia heterophylla* (Bignoniaceae), *Paullinia pinnata* versus *Matayba domingensis* (Sapindaceae), *Heteropterys laurifolia* versus *Byrsonima spicata* (Malpighiaceae). Members of the lianas (yellow colored border with green fill) and non-lianas (salmon colored border with no fill) are highlighted inside interactome networks for each of three within-family comparisons. Co-expressed nodes shared by more than two lianas (L2–L5) are retained for visual guidance as in Fig. 1. A total of six enriched GO and KEGG terms were shared between *D. unguis-cati* and *P. pinnata*. Terms enriched in *H. laurifolia* did not show overlap with the other two lianas. Permalinks for the gProfiler GO term analysis are *P. pinnata* versus *M. domingensis*: <https://biit.cs.ut.ee/gplink/ITZwlGOGgSk>; *H. laurifolia* versus *B. spicata*: <https://biit.cs.ut.ee/gplink/IFmLAWHzES9>; *D. unguis-cati* versus *T. heterophylla*: <https://biit.cs.ut.ee/gplink/iiXBz-L6T2>.

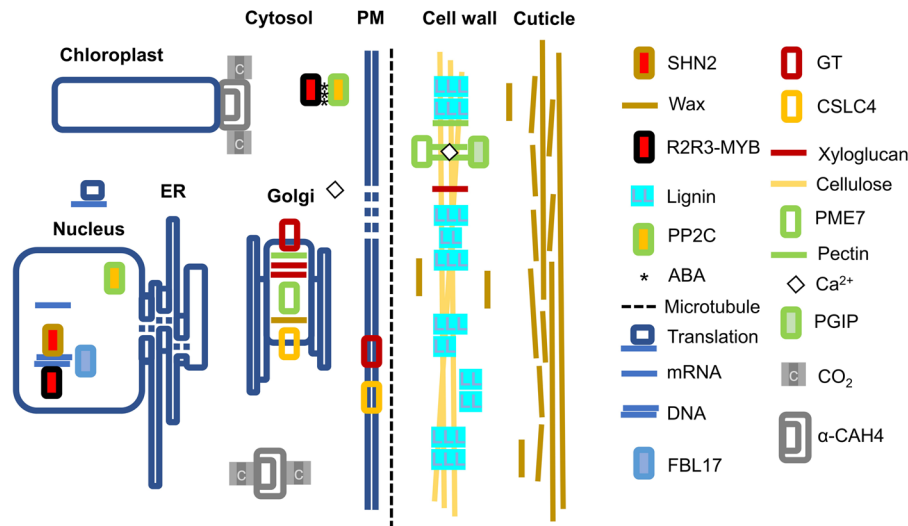


Fig. 3. A conceptual sketch of transcripts and their cellular compartments highlighted in this study. Lianas appear to invest in thickened cuticular layers through upregulation of SHN2. Cell wall remodeling enzymes CSLC4, GT, PGIP, PME7 similarly show upregulation where CSLC4, PME7 and GT are Golgi localized together with pectin, xyloglucan and wax. GT and CSLC4 move into plasma membrane (PM) and deposit xyloglucan, pectin, and cellulose onto the cell wall following microtubule orientation patterns. Upregulated FBL17 is involved in cell cycle control, endoreduplication and double-stranded DNA damage response. Alpha-CAH4 is localized to the cytosol and chloroplast and is a significant player in the CO₂ concentrating mechanism. A large number of R2R3-MYB transcription factors were co-downregulated in lianas playing significant roles as activators and repressors controlling diverse functions such as pectin, lignin and suberin mediated xylogenesis, branching and phyllotaxis and ABA mediated stress tolerance. Cell wall qualities are affected by lignin deposition and pectin crosslinking complexed with Calcium (Ca²⁺). PP2C is the most connected node forming the core of the interactome as a key player in ABA induced stress response and interacts with MYBs. Salient liana leaf transcripts collectively may form genetic features underlying the fast end of the LES.

DISCUSSION

Lianas and trees represent two widely separate growth forms with distinct trade off in biomass allocation and growth. Instead of self-supporting stems, lianas allocate most of their resources on shoot and leaf production. Liana leaves must have evolved adaptations to reduce hydraulic failure due to vascular embolism, damage on light harvesting complexes due to intense light and thermal stress, dehydration due to insufficient control of stomatal conductance, inefficient carbon fixation due to mesophyll carbon diffusion limitations. Here, we provide a wide snapshot of physiologically interpretable differences in gene expression between lianas and non-lianas within a subtropical plant community and make an attempt to learn about genotypic drivers of life-history phenotypes from transcriptional responses of co-habitants. (Zambrano et al., 2017; Swenson and Jones, 2017; Swenson et al., 2017) (Fig. S1, Dataset S1). At early developmental stages, transcriptomic differences between woody lianas and herbaceous vines are most likely minimal. For this reason, we included three herbaceous climbers in the dataset with the assumption that leaves of woody and herbaceous climbers would experience similar constraints independent from their stem morphology and would perform in parallel (Table 1). Despite the ontogenetic and tissue diversity limitations, there exists a suite of differences consistent with expectations from the biology of climbing plants and functional traits theorized in LES (Wright et al., 2004; Osnas et al., 2013; Wyka et al., 2013; Onoda et al., 2017; Mello et al., 2020). Top leaf level functional traits of lianas correspond to higher SLA and maximal photosynthetic rates. Enzymes we highlight orchestrate cuticular and parenchymal properties related to mesophyll conductance (Fig. 3). Liana leaves may do more with less through selective endoreduplication. The resultant action of cell wall building enzymes and control of lignification appears to be in line with the predictions of the LES in lianas. Downregulation of a high number of

MYB transcription factors belonging to the largest gene family in plants indicates a crosstalk with cell wall building enzymes since many R2R3-MYBs are known to be involved in lignin deposition. A few R2R3-MYBs are also involved in ABA-mediated control of transpiration, which may explain growth advantage experienced by lianas observed in seasonally dry tropical forests (Schnitzer, 2018; Umaña et al., 2019; Medina-Vega et al., 2021).

Top co-expressed transcripts in lianas include enzymes relevant to LES

Top co-expressed genes in our analysis correspond to enzymes synthesizing or modifying cell wall components, cuticle properties, carbon concentrating mechanism, cell cycle progression through endoreduplication and double-stranded DNA damage response (Table 2; Fig. 3; Fig. S3). Modifications of cell wall components and cuticle properties are beneficial for lianas in developing leaves with high SLA and optical properties since excessive light levels may damage light harvesting complexes. Reduced production cost due to altered secondary cell wall composition, increased rates of carbon fixation and fast tissue turnover in most liana species may be an outcome of series of mesophyll adaptations. Facilitation of carbon capture and diffusion through an active carbon concentrating enzyme capable of scavenging low levels of CO₂ floating inside the leaf could be adaptive since leaves with high SLA can accommodate only a few mesophyll cell layers. Lianas could be achieving more with less by increasing gene dosage through selective endoreduplication. In lianas, under hydraulic constraints, machinery evolved for the repair of damaged nuclear genetic material may be primed as early as the seedling stage.

Cuticle properties controlled by SHN2

We found co-expression of SHN2 transcription factor exclusively by five liana species involved in regulation of lipid biosynthesis

(Table 2; Fig. 3; Fig. S3). SHNs together with wax inducers (WINs) stimulate biosynthesis of cuticular wax in leaf epidermis and reduce stomatal density (Aharoni et al., 2004; Broun et al., 2004). SHNs can induce changes in the leaf cuticle to make it more resistant to light stress and avoid excessive heating (Zandalinas et al., 2020). Overexpressed SHN2 may indirectly suppress the biosynthesis of lignified secondary wall (Liu et al., 2017). This is relevant for lianas because the leaf economical spectrum of lianas predict forms with cheap, disposable but efficient blades with reduced longevity and defense (Mello et al., 2020). In our study, many MYBs, some of which involved in lignified secondary wall biosynthesis, have been observed to be downregulated in lianas (Fig. 1B; Table 2; Fig. S3). All 149 genes belonging to AP2/ERF protein family in grapevine genome have been transcriptionally characterized and the Arabidopsis SHN2 ortholog gene (GSVIVP00032652001/VvERF044) also showed an upregulated pattern in the grapevine leaves (Licausi et al., 2010).

Cell wall remodeling enzymes

We observed upregulation of a suite of cell wall remodeling enzymes such as CSLC4, PME7, GT, PGIP (Fig. 1A, Fig. 3; Table 2; Fig. S3) (Lampugnani et al., 2018). These cell wall modifying enzymes not only determine leaf morphogenesis but also phyllotaxis (Zhao et al., 2019). Less lignified leaves with altered cellulose and hemicellulose composition may be one way to achieve set of traits defining liana leaves with fast growth, resource uptake and high productivity end of the leaf economic spectrum. The rigidity of the cell wall is proportional to the number of xyloglucan connections maintained through Golgi-located xyloglucan synthesizing enzymes (Hayashi and Kaida, 2011; Chou et al., 2015). Removal of xyloglucan ties loosens cell wall leading to asymmetries in elasticity and resulting in highly convoluted structures (Park and Cosgrove, 2015). Overexpression of xyloglucanase in transgenic poplar resulted in droopy leaves with petioles slanted downward (Baba et al., 2009). This could be significant because lianas tend to evolve longer petioles when exposed to full light and rigidity of petioles can determine photosynthetic efficiency especially in cordate leaves (Givnish and Vermeij, 1976; Takenaka, 1994). Microtubules laid on the cell wall during development can become a reinforcing factor in anisotropic growth since cellulose synthases move along those tubules altering orientations of cellulose deposits (Bringmann et al., 2012). Cellulose is the main load bearing component especially in secondary cell walls (Lampugnani et al., 2018; Zhong and Ye, 2015). Quintuple mutant analysis of Arabidopsis has revealed that besides CSLC4 four other CSLC genes (CSLC5, CSLC6, CSLC8, and CSLC12) also possess xyloglucan synthase activity (Kim et al., 2020). Another cell wall remodeling enzyme showing upregulation among lianas is the PME7 (Table 2; Fig. 3; Fig. S3). A composition of esterified and de-esterified pectin residues control calcium-mediated stiffness of gel matrix within the cell wall and contributes to diversification of organ shapes through directional growth. Arabidopsis mutants show that xyloglucans and pectin can together influence shoot meristem and phyllotaxis (Zhao et al., 2019). Cell wall remodeling could be a morphogenetic response resulting in shade avoidance in lianas (Kim et al., 2020). For instance, disrupted phyllotaxy observed in Arabidopsis mutants may have been reinforced in lianas by coordinated expression of cell wall modifying enzymes which are also responsible from gravitropic response such as the positive gravitropism (GO:0009958), tropism (GO:0009606), response to gravity (GO:0009629), gravitropism (GO:0009630) enriched

among GO term analysis of upregulated transcripts (Fig. 1A) (Hayashi and Kaida, 2011; Zhao et al., 2019).

An active component of carbon concentrating mechanism along the mesophyll may increase fixation efficiency of liana leaves

Our results also show exclusive activity of α -CAH4 in lianas but not in trees and shrubs indicating enhanced carbon concentrating mechanism along the liana mesophyll (Table 2; Fig. 3; Fig. S3). The carbon concentrating mechanism describes the enzymatic pathways the atmospheric CO₂ flows through the mesophyll cell wall and the plasma membrane into the liquid cytosolic phase imposing limitations on diffusion known as mesophyll conductance. Mesophyll conductance is a significant driving factor in LES (Onoda et al., 2017). Carbonic anhydrases are zinc metalloenzymes driving the reversible hydration of CO₂ significantly aiding downstream carboxylases such as pyruvate carboxylase, acetyl-coenzyme A carboxylase, PEP carboxylase and RUBISCO (Supuran, 2018). Plants have three classes (alpha-, beta-, gamma-) of carbonic anhydrases (DiMario et al., 2017). Alpha-carbonic anhydrases are the largest class in the plant kingdom and are highly compartmentalized (Momayyezi et al., 2020). Their expression has been detected in cytosol and chloroplast. Carbonic anhydrases can capture CO₂ generated by dark respiration as well as photorespiration enhancing carbon assimilation efficiency of RUBISCO. Stomatal metrics and morphology can determine water use efficiency (Bertolino et al., 2019). Liana leaves with typically lower stomatal densities could be expressing α -CAH4 in higher levels increasing the efficiency of the spongy mesophyll conductance along the CO₂ diffusion pathway (Table 2; Fig. 3). An active carbonic anhydrase may contribute to the maintenance of lower stomatal densities. Fossil evidence and present-day observations confirm that plants grown in elevated CO₂ environments decrease their stomatal conductance and stomatal index (Retallack, 2001; Lammertsma et al., 2011). Plants over-expressing carbonic anhydrase in their guard cells have the potential to improve their water use efficiency. In guard cells, carbonic anhydrases serve as upstream regulators induced by CO₂ levels independent of leaf photosynthetic rates (Hu et al., 2010). High carbonic anhydrase activity could be making lianas more resilient in hotter and drier conditions by reducing the need for evapotranspiration (Umaña et al., 2019; Medina-Vega et al., 2021).

Liana leaves express FBL17 transcription factor controlling cell cycle progression and double-stranded DNA damage response

We have observed that four lianas exclusively expressed the plant-specific FBL17 transcript that serves as a major checkpoint in cell cycle progression from Gap1 (G1) into Synthesis (S) phases (Harashima et al., 2013) (Table 2, Fig. 3; Fig. S3). From the LES perspective, leaf construction is the sum of spatially controlled cytoplasmic growth and cell division. During leaf expansion, a plant can do more with less through a process called endoreduplication where distinct cells may increase their genomic content and gene dosage without cell division (Melaragno et al., 1993; Kalve et al., 2014; Vercruyssen et al., 2020). During G1 into S phase transition cyclin dependent kinase type A (CDKA) and cyclin D (CYCD) work together to trigger an expression cascade of DNA replication genes. FBL17 is an indispensable protein component of E3 ubiquitin ligase SCF (ASK-cullin-F-box) for ubiquitination of CDK inhibitor proteins KRPs (KIP-related protein/inhibitor-interactor of CDKs) for proteasomal degradation and forms a

checkpoint in G1/S transition together with CDKA/CYD complex. Unregulated FBL17 expression causes disruptions in cell cycle genes, while at the same time it can be involved in double stranded DNA damage response leading to abnormalities in root and shoot meristems (Noir et al., 2015; Gentric et al., 2020). In plants, FBL17 is involved in double stranded DNA break induced damage response, which is crucial for cell cycle arrest at the first G1/S checkpoint before being committed to division (Zhao et al., 2012; Gentric et al., 2020). Loss of function in FBL17 shuts off endoreduplication in Arabidopsis trichomes (Noir et al., 2015). Liana leaves appear to be well protected especially against UV-induced damage with thickened secondary cell wall and waxy cuticle, therefore, upregulation of FBL17 might be a deliberate strategy to avoid interruptions in cell cycle. Downregulation of MYB4 and MYB75 involved in biosynthesis of UV-protecting flavonoids and anthocyanins and MYB46 involved in upstream of endoreduplication regulators could be a similarly reconciliatory exertion (Hemm et al., 2001; Tohge et al., 2011, 2005; Taylor-Teeple et al., 2015) (Table 2, Fig. S3). Compatible with FBL17, some of the enriched GO terms for the top ten most connected nodes include (GO:0022402) cell cycle, (GO:0007049), double-strand break repair via break-induced replication (GO:0000727) (Dataset S1).

Co-downregulated transcripts are dominated by MYB-R2R3 transcription factors

Silencing of even a single transcription factor can lead to drastic changes in phenotype with many examples from domesticated plants (Tang et al., 2010, 2013). In our comparisons, transcripts not expressed in lianas are overwhelmingly dominated by R2R3 subclass MYB transcription factors (Fig. 1, Fig. 3; Table 2; Fig. S3). Significance of MYB-R2R3 co-downregulation for lianas could include stomatal control, lignification and plant architecture including phyllotaxis. The MYB-R2R3 serve as major activators and repressors controlling diverse functions such as pectin, lignin and suberin mediated xylogenesis through control of the phenolic acid metabolism, modulation of developmental signaling, cell cycle, epidermal cell fate and patterning (Cavallini et al., 2015; Oh et al., 2003; Matus et al., 2008; Dubos et al., 2010). There may be a crosstalk among the silent MYB-R2R3 transcription factors and exclusively upregulated set of cell wall building enzymes together shaping the liana leaf economy.

MYB genes are found in all eukaryotes and is the largest transcription factor family in Arabidopsis (Dubos et al., 2010). The MYB-R2R3 subfamily in land plants (Embryophyta) has expanded during the Silurian widening the structural complexity of tissues through secondary cell wall biosynthesis and vascularization (Raven et al., 2005; Jiang and Rao, 2020; Chang et al., 2020). Functional predictions of most MYBs have been sufficiently characterized both experimentally and computationally in myriad model plants. The grapevine and Arabidopsis have 134 and 126 R2R3-MYB genes, respectively (Wong et al., 2016; Dubos et al., 2010). Structurally, the MYB family harbors significant levels of intrinsically disordered regions outside their canonical DNA-binding domains that possess potential for other functions regulated by post-transcriptional modifications (Millard et al., 2019). Here we will highlight a subset of the R2R3-MYBs (MYB44, MYB4/MYB308, MYB46, MYB39, MYB38, MYB37) showing no expression in lianas (Fig. 1, Table 2; Fig. S3).

MYB44 and ABA-mediated stress tolerance

One particular R2R3-MYB downregulated in our analysis is MYB44 that deserves special attention since it is heavily involved

with the core node of the interactome the protein phosphatase PP2C (Table 2; Fig. S3). Lianas adopted features such as smaller and low-density stomatal openings with sunken guard cells for reduction of water loss due to excessive transpiration as early as the Paleozoic based on cuticular analysis of pteridosperm lianas (Krings et al., 2003). The sesquiterpenoid plant hormone ABA mediates crucial physiological processes optimizing water use, carbon uptake and light signaling. Although guard cells can endogenously synthesize ABA, the main source for the whole plant is vascular parenchyma. In the presence of ABA, ABA receptors (PYR/PYL/RCAR) aggregate with clade A PP2Cs reducing the ability of PP2Cs to inhibit sugar non-fermenting 1 related protein kinase 2 (SnRk2) kinases. Freed from PP2C control, SnRK2 kinases phosphorylate and arm transcription factor genes to collectively induce or repress ABA-responsive genes downstream elucidating ABA-dependent stress response (Jung et al., 2020; Soon et al., 2012). The behavior of MYB44 appears to have opposing modes. In one mode, under stress MYB44 exerts suppressive effect on PP2C. The over expressed MYB44 has been shown to have antagonistic interaction with PP2C enzymes, which control ABA signal transduction cascade in concert with ABA receptors (Jung et al., 2008, 2020; Xue et al., 2008) (Table 2). Overexpressed MYB44 also appeared to have binding interaction with ABA receptors (Jaradat et al., 2013). In the other mode, MYB44 binds to transcription start sites of PP2C genes and represses their expression in normal unstressed conditions (Nguyen and Cheong, 2018a). Moreover, akin to the prokaryotic end-product repression, MYB44 can bind to its own promoter in an act of self-silencing (Nguyen and Cheong, 2018b). Induction of PP2Cs is reported from drought challenged grapevine transcriptomes (Haider et al., 2017). In lianas, absence of MYB44 activity may be releasing repressed PP2C and could be a desensitization mechanism for less aggressive stomatal control. For instance, transgenic gray poplar trees expressing mutant ABA insensitive 1 (*abi1*) belonging to PP2Cs led to large and unresponsive stomata with inhibited lateral bud growth (Arend et al., 2009). Downregulation of MYB37 could be a part of this desensitization scheme (Yu et al., 2016) (Table 2; Fig. S3).

One noteworthy observation is that the top connected node forming the core of our interactome is another PP2C with kinase activity belonging to clade L protein phosphatases (VIT_11s0016g03430.t01/AT2G20050) (Xue et al., 2008) (Table 2; Fig. S3). The secondary messenger cyclic GMP binds and inhibits the phosphatase activity of this PP2C in favor of kinase activity. For this reason, this PP2C is known as cGMP-dependent protein kinase (PKG) and it phosphorylates the transcription factor GAMYB to upregulate gibberellic acid-responsive genes (Shen et al., 2019). Leaf cell expansion following cell division also revolves around PP2C through ATPase activity acidifying cell walls (Vercurysse et al., 2020). In addition to PP2C, many of the rest of the highly connected nodes are pertaining to chromatin modification (Table 2). Chromatin modelers modify histone tails and contribute to the repressor activity of MYB44 (Nguyen and Cheong, 2018a,b).

MYB44 is central in transduction of multiple local abiotic stresses into whole plant response. For instance, SHN2 and MYB86 are responsive to excessive light stress in leaves but when plants experience heat stress simultaneously, incorporation of multiple forcings into a systemic acclimation is carried out by mediators including MYB44 (Zandalinas et al., 2020).

R2R3-MYBs as regulators of secondary cell wall biosynthesis

Lignin biosynthesis is repressed and activated by several R2R3-MYB genes, and it is curious whether the downregulated R2R3-MYBs identified in our study show biological associations with the

set of upregulated cell wall remodeling and epicuticular enzymes (Fig. 1, Table 2; Fig. S3). For instance, overexpressed SHN2 suppresses many MYBs involved in lignified secondary wall biosynthesis as evidenced from poplar (Liu et al., 2017). Transcriptional regulation of secondary cell wall related lignin deposition in liana leaves appears to be fine-tuned since they downregulate a set of R2R3-MYBs serving as suppressors and activators of lignin biosynthesis (Zhong and Ye, 2015) (Table 2). Lignin biosynthesis contains many redundant enzymes and lianas may be regulating multiple check points through silencing of multiple MYBs to achieve their functional leaf morphology encapsulated by LES hypothesis (Taylor-Teeples et al., 2015; Onoda et al., 2017).

Downregulated R2R3-MYBs as repressors of lignin biosynthesis

We have identified MYB46, MYB4/MYB308, and MYB75 reported to be involved in lignin repression downregulated in liana leaves (Behr et al., 2019) (Table 2; Fig. S3). MYB46 targets a set of 13 genes in lignin biosynthesis (Zhong and Ye, 2015; Taylor-Teeples et al., 2015; Kim et al., 2014; Behr et al., 2019; Nakano et al., 2015). A repressor of endoreduplication called E2Fc is also known to bind to the promoter of MYB46 and suggests a potential crosstalk with the cell cycle regulator FBL-17 (Kim et al., 2014; Taylor-Teeples et al., 2015). Overexpressed MYB4, an ortholog of MYB308, leads to suppression of lignin biosynthesis and reduced elongation of stem internodes, which is a characteristic liana-associated trait (Tamagnone et al., 1998). MYB4 is induced by MYB46 but also (similar to MYB44) is inhibited by its own in an end-product repression fashion (Behr et al., 2019; Zhong and Ye, 2015). MYB75 is a repressor of lignin and secondary wall biosynthetic genes but also an inducer of anthocyanins and flavonoids. Loss of function mutants in *Arabidopsis* displayed thickened secondary cell walls (Bhargava et al., 2010; Kreynes et al., 2021). MYB75 is a highly phosphorylation dependent protein with elevated internode expression in maize transcriptome and its role in lianas could be parallel to that of MYB4 (Kreynes et al., 2021; Stelplflug et al., 2016; Tamagnone et al., 1998).

Downregulated R2R3-MYBs as activators of secondary cell wall synthesis and changers of epidermal properties

Downregulated R2R3-MYBs involved as positive regulators of secondary cell wall synthesis are MYB48, MYB26, MYB39, MYB98, (Table 2; Fig. S3). MYB48 appears to play role in xylogenesis but its mechanism of control is unclear containing evidence of alternative splicing through intron-retention (Oh et al., 2003; Wong et al., 2016). MYB26 positively regulates secondary cell wall biosynthesis in anthers (Nakano et al., 2015). MYB39 (SUBERMAN) has been shown to be a positive regulator of suberin biosynthesis in *Arabidopsis* root endodermal tissue (Cohen et al., 2020). Reduction of suberin in liana leaves maybe a factor in generally low-quality foliage with high turnover as predicted by the LES hypothesis (Graça, 2015; Onoda et al., 2017).

R2R3-MYB functions linked to epidermal morphology and plant architecture

MYB98 can be expressed in trichomes and has 83 downstream target genes in synergids (Kasahara et al., 2005; Punwani et al., 2008). Downregulation of MYB98 maybe a coordinated expression pattern favoring a particular leaf epidermal structure in liana seedlings. This maybe in concert with MYB114 repressor affecting epidermal cell fate and with MYB48 and MYB39 where in

grapevine their low expression leads to anthocyanin accumulation in fruit skin (Tirumalai et al., 2019) (Table 2; Fig. S3). Branching of the shoots into axillary meristems is controlled by MYB37 and MYB38 also known as regulator of axillary meristems (RAX1 and RAX2), which are positively controlled by a WRKY transcription factor excessive branches 1 (EXB1) (Guo et al., 2015). Transcripts of MYB37 and MYB38 are mobile from cell-to-cell (Thieme et al., 2015). Their downregulation could be a means to control side branching towards unidirectional growth in lianas especially required during the early ontogenetic developmental stages. Shoot meristems can be influenced by a mutant ribosomal protein gene (Stirnberg et al., 2012). In our interactome network some of the highest connected nodes were ribosomal proteins such as 40S ribosomal protein S13, 60S ribosomal protein L40, and chloroplast 30S ribosomal protein S5 (Table 2).

Conclusions

This study explores transcriptomic signatures related to liana leaf properties. Compared to trees, liana leaves generally carry traits colloquially conceptualized as ‘fast and furious’ type life-history strategy associated with quick growth, low cost, high turnover, high capacity for water movement, minimal investment on defense. Our results are in accordance with the LES encapsulating construction costs, rates of carbon fixation and tissue turnover. A set of uniquely expressed enzymes in charge of cell wall building, epicuticular wax synthesis, carbon capture, cell cycle appears to complement with another set of a large number of transcription factors not expressed in lianas. Through comparative transcriptomics of a diverse spectrum of families, we believe we were able to interrogate a wide set of orthologs to contribute towards understanding some of the genetic underpinnings of biology leading to the liana growth form from the leaf perspective. As further sequencing data from additional liana species with more diverse tissue types become available, the genetic basis of this fascinatingly convergent plant form will be more comprehensible.

MATERIALS AND METHODS

Sample set

The Luquillo transcriptomic set included six lianas (DIO) *Dioscorea polygonoides* (Dioscoreaceae), (HET) *Heteropterys laurifolia* (Malpighiaceae), (PAU) *Paullinia pinnata* (Sapindaceae), (SEC) *Securidaca virgata* (Polygonaceae), (SMI) *Smilax coriacea* (Smilacaceae), (DOL) *Dolichandra unguis-cati* (Bignoniaceae). We also included four more liana species from National Center for Biotechnology Information’s Sequence Read Archive (NCBI-SRA) and One Thousand PlantGenomes (1KP) dataset (Matasci et al., 2014; Leebens-Mack et al., 2019) with the following accessions (GNE) *Gnetum montanum* (Gnetaceae) SRR5908685, (SMISIE) *Smilax sieboldii* (Smilacaceae) SRR5134200, (PASCAE) *Passiflora caerulea* (Passifloraceae) 1KP id:SIZE, (SCHPAR) *Schlegelia parasitica* (Schlegeliaceae) 1KP id:GAKQ. A full list including non-liana species can be found in the Supplementary Information (Dataset S1, Fig. S1). NCBI-SRA bioproject accession for the Luquillo transcriptomic set is PRJNA837288.

Sample collection and RNA library construction

To analyze the transcriptomes, we chose healthy and fully developed leaves from seedlings of tree and liana species distributed between 350 and 450 m in elevation from the Luquillo Experimental Forest (LEF) in the north-eastern part of Puerto Rico. For each species, approximately 5 g of leaf tissue was collected and placed in a 50 ml polypropylene conical tube with RNAlater (Thermo Fisher Scientific, Waltham, MA, USA). Explants were cut with a razor blade prior to being placed in the tube to allow the RNAlater to penetrate the mesophyll quickly. Samples were then frozen at -80°C within 2 days. Rneasy Plant Mini Kit (Qiagen, Valencia, CA, USA) was

used for RNA extraction. RNA quantification and quality metrics were carried out using a NanoDrop 2000 spectrophotometer (NanoDrop Products, Wilmington, DE, USA) and an Agilent Bioanalyzer 2100 (Agilent Technologies, Santa Clara, CA, USA) RNAseq library preparations and sequencing were performed at the Beijing Genomics Institute, Shenzhen, China on Illumina HiSeq 2000 sequencer generating 100 bp paired-end reads.

Bioinformatics

Paired-end raw Illumina reads were trimmed, and quality filtered using Sickel (-q 35 -l 30 for minimum quality score and retaining sequences longer than 30 nt). Trimmed fastq files were assembled by Trinity v.2.6.6 with minimum contig length 300 (Grabherr et al., 2011). Quality of the assemblies were assessed by QUAST (Quality Assessment Tool for Genome Assemblies), validated by Bowtie2, and analyzed by BUSCO for completeness using the Embryophyta (embryophyta_odb9) benchmark gene set (Gurevich et al., 2013; Langmead and Salzberg, 2012; Simão et al., 2015) (Dataset S1). Transcriptome assemblies were annotated by EnTAP using the Diamond high performance aligner interrogating four protein databases (Uniprot, RefSeq plant proteins 94, RefSeq complete protein 94, RefSeq non-redundant protein 94) (Hart et al., 2019; Buchfink et al., 2015). Bacterial, archaeal and non-plant eukaryotic contaminants were filtered using Opisthokonta as the taxonomical cut-off (Dataset S3). Transcriptomes were frame selected and translated into proteins through built-in GeneMarkS-T module within EnTAP (Tang et al., 2015) (Dataset S3). Full-length protein sequences were filtered from EnTAP results and were blasted against indexed *V. vinifera* proteome v29720. Top hits were selected through vsearch (-ublast-evalue 1e-9 -query_cov 0.9) (Rognes et al., 2016). Blast results were matched into grapevine UNIPROT IDs and used as input into STRING database for interactome network construction (von Mering et al., 2005; Franceschini et al., 2013). Co-downregulated and co-expressed protein-protein interactome networks were imported into Cytoscape and merged into a single network (Shannon et al., 2003) (Dataset S2). The resulting interactome network was annotated with colored borders and fills to highlight biologically informative nodes. Phylogenetic tree of lianas and non-lianas was constructed using the TimeTree resource compiling evolutionary divergence times derived from molecular sequence data (Kumar et al., 2017). GO terms were interrogated using g:Profiler by providing gene lists corresponding to UNIPROT IDs (Raudvere et al., 2019). Results generated from g:Profiler are accessible through permalinks in SI Text.

Trait data

LA and SLA trait data came from Zambrano et al. (2019) for mature trees in LEF (Zambrano et al., 2019). For *D. unguis-cati* we used values from Osunkoya et al. (2014). Trait data for *G. montanum* was obtained from the China Trait Database Wang et al. (2018). For the Luquillo vines *D. polygonoides*, *H. laurifolia*, *P. pinnata*, *S. virgata*, and *S. coriacea* we used unpublished data obtained from seedlings from our co-authors Samantha J. Worthy and Maria N. Umaña. Ordination of leaf traits was done by the ClustVis webserver (Metsalu and Vilo, 2015). Trait values and calculated PCA scores can be found in Dataset S1.

A note on co-downregulation

Co-downregulation should not be confused with gene deletions observed in the genomes of many parasitic and carnivorous plants (Nevill et al., 2019). Absence of gene activity does not necessarily mean gene loss or loss of function. Therefore, here we prefer to use the term co-downregulation to define orthologous genes that are most likely present in lianas but not actively transcribed. Similarly, we define co-expression as orthologous genes from climbers demonstrating a sufficiently high expression pattern compared to non-liana counterparts, which allows detection as full-length transcripts.

Acknowledgements

We would like to thank Dr Jill Wegrzyn for being a valuable resource person in bioinformatics and providing access to University of Connecticut's Xanadu High-Performance Computation Cluster. We would like to thank participants of the 2019 Smithsonian Tropical Research Institute-CTFS ForestGEO annual data analysis

workshop in Singapore especially to Dr Marco Visser for his useful insight and discussion that has helped shape the final version of this manuscript.

Competing interests

The authors declare no competing or financial interests.

Author contributions

Conceptualization: U.U.S., S.J.D., N.G.S.; Validation: U.U.S., N.G.S.; Formal analysis: U.U.S.; Investigation: U.U.S., N.G.S.; Resources: S.J.W., M.N.U., N.G.S.; Data curation: U.U.S.; Writing - original draft: U.U.S., S.J.W., M.N.U.; Writing - review & editing: U.U.S., S.J.W., M.N.U., S.J.D., S.M.M., N.G.S.; Visualization: U.U.S.; Supervision: N.G.S.; Project administration: N.G.S.; Funding acquisition: N.G.S.

Funding

This work was funded by the US National Science Foundation (DEB-1638488; DEB-1643052).

Data availability

Dryad accession permalink: <https://doi.org/10.5061/dryad.n5tb2rbw3>. NCBI-SRA Bioproject accession: PRJNA837288.

References

- Aharoni, A., Dixit, S., Jetter, R., Thoenes, E., Arkel, G. V. and Pereira, A. (2004). The SHINE clade of AP2 domain transcription factors activates wax biosynthesis, alters cuticle properties, and confers drought tolerance when overexpressed in arabidopsis. *Plant Cell* **16**, 2463-2480. doi:10.1105/tpc.104.022897
- Andrade, J. L., Meinzer, F. C., Goldstein, G. and Schnitzer, S. A. (2005). Water uptake and transport in lianas and co-occurring trees of a seasonally dry tropical forest. *Trees* **19**, 282-289. doi:10.1007/s00468-004-0388-x
- Arend, M., Schnitzler, J.-P., Ehltling, B., Hänsch, R., Lange, T., Rennenberg, H., Himmelbach, A., Grill, E. and Fromm, J. (2009). Expression of the arabidopsis mutant *abi1* gene alters abscisic acid sensitivity, stomatal development, and growth morphology in gray poplars. *Plant Physiol.* **151**, 2110-2119. doi:10.1104/pp.109.144956
- Asner, G. P. and Martin, R. E. (2012). Contrasting leaf chemical traits in tropical lianas and trees: implications for future forest composition. *Ecol. Lett.* **15**, 1001-1007. doi:10.1111/j.1461-0248.2012.01821.x
- Avalos, G., Mulkey, S. S. and Kitajima, K. (1999). Leaf optical properties of trees and lianas in the outer canopy of a tropical dry forest. *Biotropica* **31**, 517-520. doi:10.1111/j.1744-7429.1999.tb00395.x
- Baba, K., Park, Y. W., Kaku, T., Kaida, R., Takeuchi, M., Yoshida, M., Hosoo, Y., Ojio, Y., Okuyama, T., Taniguchi, T. et al. (2009). Xyloglucan for generating tensile stress to bend tree stem. *Mol. Plant* **2**, 893-903. doi:10.1093/mp/ssp054
- Barker, M. G. and Pérez-Salicrup, D. (2000). Comparative water relations of mature mahogany (*Swietenia macrophylla*) trees with and without lianas in a subhumid, seasonally dry forest in Bolivia. *Tree Physiol.* **20**, 1167-1174. doi:10.1093/treephys/20.17.1167
- Behr, M., Guerriero, G., Grima-Pettenati, J. and Baucher, M. (2019). A molecular blueprint of lignin repression. *Trends Plant Sci.* **24**, 1052-1064. doi:10.1016/j.tplants.2019.07.006
- Bertolino, L. T., Caine, R. S. and Gray, J. E. (2019). Impact of stomatal density and morphology on water-use efficiency in a changing world. *Front. Plant Sci.* **10**, 225. doi:10.3389/fpls.2019.00225
- Bhargava, A., Mansfield, S. D., Hall, H. C., Douglas, C. J. and Ellis, B. E. (2010). MYB75 functions in regulation of secondary cell wall formation in the arabidopsis inflorescence stem. *Plant Physiol.* **154**, 1428-1438. doi:10.1104/pp.110.162735
- Bringmann, M., Landrein, B., Schudoma, C., Hamant, O., Hauser, M.-T. and Persson, S. (2012). Cracking the elusive alignment hypothesis: the microtubule-cellulose synthase nexus unraveled. *Trends Plant Sci.* **17**, 666-674. doi:10.1016/j.tplants.2012.06.003
- Broun, P., Poindexter, P., Osborne, E., Jiang, C.-Z. and Riechmann, J. L. (2004). WIN1, a transcriptional activator of epidermal wax accumulation in Arabidopsis. *Proc. Natl. Acad. Sci. USA* **101**, 4706-4711. doi:10.1073/pnas.0305574101
- Buchfink, B., Xie, C. and Huson, D. H. (2015). Fast and sensitive protein alignment using DIAMOND. *Nat. Methods* **12**, 59-60. doi:10.1038/nmeth.3176
- Cai, Z.-Q., Schnitzer, S. A. and Bongers, F. (2009). Seasonal differences in leaf-level physiology give lianas a competitive advantage over trees in a tropical seasonal forest. *Oecologia* **161**, 25-33. doi:10.1007/s00442-009-1355-4
- Cavallini, E., Matus, J. T., Finezzo, L., Zenoni, S., Loyola, R., Guzzo, F., Schlechter, R., Ageorges, A., Arce-Johnson, P. and Torrielli, G. B. (2015). The phenylpropanoid pathway is controlled at different branches by a set of R2R3-MYB C2 repressors in grapevine. *Plant Physiol.* **167**, 1448-1470. doi:10.1104/pp.114.256172
- Chang, X., Xie, S., Wei, L., Lu, Z., Chen, Z.-H., Chen, F., Lai, Z., Lin, Z. and Zhang, L. (2020). Origins and stepwise expansion of R2R3-MYB transcription factors for the terrestrial adaptation of plants. *Front. Plant Sci.* **11**, 575360. doi:10.3389/fpls.2020.575360

- Chery, J. G., Pace, M. R., Acevedo-Rodríguez, P., Specht, C. D. and Rothfels, C. J. (2020). Modifications during early plant development promote the evolution of nature's most complex woods. *Curr. Biol.* **30**, 237-244.e2. doi:10.1016/j.cub.2019.11.003
- Chitwood, D. H., Ranjan, A., Martinez, C. C., Headland, L. R., Thiem, T., Kumar, R., Covington, M. F., Hatcher, T., Naylor, D. T., Zimmerman, S. et al. (2014). A modern ampelography: a genetic basis for leaf shape and venation patterning in grape. *Plant Physiol.* **164**, 259-272. doi:10.1104/pp.113.229708
- Chou, Y.-H., Pogorelec, G., Young, Z. T. and Zabolina, O. A. (2015). Protein-protein interactions among xyloglucan-synthesizing enzymes and formation of golgi-localized multiprotein complexes. *Plant Cell Physiol.* **56**, 255-267. doi:10.1093/pcp/pcu161
- Cohen, H., Fedjuk, V., Wang, C., Wu, S. and Aharoni, A. (2020). SUBERMAN regulates developmental suberization of the Arabidopsis root endodermis. *Plant J.* **102**, 431-447. doi:10.1111/tpj.14711
- Daldoul, S., Boubakri, H., Gargouri, M. and Mliki, A. (2020). Recent advances in biotechnological studies on wild grapevines as valuable resistance sources for smart viticulture. *Mol. Biol. Rep.* **47**, 3141-3153. doi:10.1007/s11033-020-05363-0
- Darwin, C. (1865). On the movements and habits of climbing plants. *J. Linn. Soc. Lond. Bot.* **9**, 1-118. doi:10.1111/j.1095-8339.1865.tb00011.x
- Dayer, S., Reingwurtz, I., McElrone, A. J. and Gambetta, G. A. (2019). Response and recovery of grapevine to water deficit: from genes to physiology. In *The Grape Genome: Compendium of Plant Genomes* (ed. D. Cantu and M. A. Walker), pp. 223-245. Cham: Springer International Publishing.
- DiMario, R. J., Clayton, H., Mukherjee, A., Ludwig, M. and Moroney, J. V. (2017). Plant carbonic anhydrases: structures, locations, evolution, and physiological roles. *Mol. Plant* **10**, 30-46. doi:10.1016/j.molp.2016.09.001
- Dubos, C., Stracke, R., Grotewold, E., Weisshaar, B., Martin, C. and Lepiniec, L. (2010). MYB transcription factors in Arabidopsis. *Trends Plant Sci.* **15**, 573-581. doi:10.1016/j.tplants.2010.06.005
- Ewers, F. W., Rosell, J. A. and Olson, M. E. (2015). Lianas as structural parasites. In *Functional and Ecological Xylem Anatomy* (ed. U. Hacke), pp. 163-188. Cham: Springer International Publishing.
- Franceschini, A., Szklarczyk, D., Frankild, S., Kuhn, M., Simonovic, M., Roth, A., Lin, J., Minguez, P., Bork, P., von Mering, C. et al. (2013). STRING v9.1: protein-protein interaction networks, with increased coverage and integration. *Nucleic Acids Res.* **41**, D808-D815. doi:10.1093/nar/gks1094
- Gentric, N., Masoud, K., Journot, R. P., Cognat, V., Chabouté, M.-E., Noir, S. and Genschik, P. (2020). The F-box-like protein FBL17 is a regulator of DNA-damage response and colocalizes with RETINOBLASTOMA RELATED1 at DNA lesion sites. *Plant Physiol.* **183**, 1295-1305. doi:10.1104/pp.20.00188
- Gentry, A. H. (1992). The distribution and evolution of climbing plants.
- Gioppato, H. A., da Silva, M. B., Carrara, S., Palermo, B. R. Z., de Souza Moraes, T. and Dornelas, M. C. (2019). Genomic and transcriptomic approaches to understand Passiflora physiology and to contribute to passionfruit breeding. *Theor. Exp. Plant Physiol.* **31**, 173-181. doi:10.1007/s40626-018-0134-1
- Givnish, T. J. and Vermeij, G. J. (1976). Sizes and shapes of liane leaves. *Am. Nat.* **110**, 743-778. doi:10.1086/283101
- Graça, J. (2015). Suberin: the biopolyester at the frontier of plants. *Front. Chem.* **3**, 62. doi:10.3389/fchem.2015.00062
- Grabherr, M. G., Haas, B. J., Yassour, M., Levin, J. Z., Thompson, D. A., Amit, I., Adiconis, X., Fan, L., Raychowdhury, R., Zeng, Q. et al. (2011). Full-length transcriptome assembly from RNA-Seq data without a reference genome. *Nat. Biotechnol.* **29**, 644-652. doi:10.1038/nbt.1883
- Guo, D., Zhang, J., Wang, X., Han, X., Wei, B., Wang, J., Li, B., Yu, H., Huang, Q., Gu, H. et al. (2015). The WRKY transcription factor WRKY71/EXB1 controls shoot branching by transcriptionally regulating rax genes in arabidopsis. *Plant Cell* **27**, 3112-3127. doi:10.1105/tpc.15.00829
- Gurevich, A., Saveliev, V., Yahhi, N. and Tesler, G. (2013). QUAST: quality assessment tool for genome assemblies. *Bioinformatics* **29**, 1072-1075. doi:10.1093/bioinformatics/btt086
- Guzmán Q, J. A., Sánchez-Azofeifa, G. A. and Rivard, B. (2018). Differences in leaf temperature between lianas and trees in the neotropical canopy. *Forests* **9**, 307. doi:10.3390/f9060307
- Haider, M. S., Zhang, C., Kurjogi, M. M., Pervaiz, T., Zheng, T., Zhang, C., Lide, C., Shangguan, L. and Fang, J. (2017). Insights into grapevine defense response against drought as revealed by biochemical, physiological and RNA-Seq analysis. *Sci. Rep.* **7**, 13134. doi:10.1038/s41598-017-13464-3
- Harashima, H., Dissmeyer, N. and Schnittger, A. (2013). Cell cycle control across the eukaryotic kingdom. *Trends Cell Biol.* **23**, 345-356. doi:10.1016/j.tcb.2013.03.002
- Hart, A. J., Ginzburg, S., Xu, M. S., Fisher, C. R., Rahmatpour, N., Mitton, J. B., Paul, R. and Wegrzyn, J. L. (2019). EnTAP: Bringing faster and smarter functional annotation to non-model eukaryotic transcriptomes. *Mol. Ecol. Resour.* **20**, 591-604. doi:10.1111/1755-0998.13106
- Hayashi, T. and Kaida, R. (2011). Functions of xyloglucan in plant cells. *Mol. Plant* **4**, 17-24. doi:10.1093/mp/ssq063
- Hemm, M. R., Herrmann, K. M. and Chapple, C. (2001). AtMYB4: a transcription factor general in the battle against UV. *Trends Plant Sci.* **6**, 135-136. doi:10.1016/S1360-1385(01)01915-X
- Hu, H., Boisson-Dernier, A., Israelsson-Nordström, M., Böhmer, M., Xue, S., Ries, A., Godoski, J., Kuhn, J. M. and Schroeder, J. I. (2010). Carbonic anhydrases are upstream regulators in guard cells of co2-controlled stomatal movements. *Nat. Cell Biol.* **12**, 87-93. doi:10.1038/ncb2009
- Hu, L. and Li, M. (2015). Diversity and Distribution of Climbing Plants in Eurasia and North Africa. In *Biodiversity of Lianas: Sustainable Development and Biodiversity* (ed. N. Parthasarathy), pp. 57-79. Cham: Springer International Publishing.
- Hung, T. H., So, T., Sreng, S., Thammavong, B., Boounithiphonh, C., Boshier, D. H. and MacKay, J. J. (2020). Reference transcriptomes and comparative analyses of six species in the threatened rosewood genus Dalbergia. *Sci. Rep.* **10**, 17749. doi:10.1038/s41598-020-74814-2
- Ichihashi, R. and Tateno, M. (2015). Biomass allocation and long-term growth patterns of temperate lianas in comparison with trees. *New Phytol.* **207**, 604-612. doi:10.1111/nph.13391
- Jaillon, O., Aury, J.-M., Noel, B., Policriti, A., Clepet, C., Casagrande, A., Choisne, N., Aubourg, S., Vitulo, N., Jubin, C. et al. (2007). The grapevine genome sequence suggests ancestral hexaploidization in major angiosperm phyla. *Nature* **449**, 463-467. doi:10.1038/nature06148
- Jaradat, M. R., Feurtado, J. A., Huang, D., Lu, Y. and Cutler, A. J. (2013). Multiple roles of the transcription factor AtMYBRR1/AtMYB44 in ABA signaling, stress responses, and leaf senescence. *BMC Plant Biol.* **13**, 192. doi:10.1186/1471-2229-13-192
- Jiang, C.-K. and Rao, G.-Y. (2020). Insights into the diversification and evolution of R2R3-MYB transcription factors in plants. *Plant Physiol.* **183**, 637-655. doi:10.1104/pp.19.01082
- Jung, C., Seo, J. S., Han, S. W., Koo, Y. J., Kim, C. H., Song, S. I., Nahm, B. H., Choi, Y. D. and Cheong, J.-J. (2008). Overexpression of AtMYB44 enhances stomatal closure to confer abiotic stress tolerance in transgenic arabidopsis. *Plant Physiol.* **146**, 623-635. doi:10.1104/pp.107.110981
- Jung, C., Nguyen, N. H. and Cheong, J.-J. (2020). Transcriptional regulation of protein phosphatase 2C genes to modulate abscisic acid signaling. *Int. J. Mol. Sci.* **21**, 9517. doi:10.3390/ijms21249517
- Kalve, S., De Vos, D. and Beemster, G. T. S. (2014). Leaf development: a cellular perspective. *Front. Plant Sci.* **5**, 362. doi:10.3389/fpls.2014.00362
- Kasahara, R. D., Portereiko, M. F., Sandaklie-Nikolova, L., Rabiger, D. S. and Drews, G. N. (2005). MYB98 is required for pollen tube guidance and synergid cell differentiation in arabidopsis. *Plant Cell* **17**, 2981-2992. doi:10.1105/tpc.105.034603
- Kim, W.-C., Kim, J.-Y., Ko, J.-H., Kang, H. and Han, K.-H. (2014). Identification of direct targets of transcription factor MYB46 provides insights into the transcriptional regulation of secondary wall biosynthesis. *Plant Mol. Biol.* **85**, 589-599. doi:10.1007/s11103-014-0205-x
- Kim, S.-J., Chandrasekar, B., Rea, A. C., Danhof, L., Zemelis-Durfee, S., Thrower, N., Shepard, Z. S., Pauly, M., Brandizzi, F. and Keegstra, K. (2020). The synthesis of xyloglucan, an abundant plant cell wall polysaccharide, requires CSLC function. *Proc. Natl. Acad. Sci. USA* **117**, 20316-20324. doi:10.1073/pnas.2007245117
- Kreyness, A. E., Yong, Z. and Ellis, B. E. (2021). Developmental phenotypes of Arabidopsis plants expressing phosphovariants of AtMYB75. *Plant Signal. Behav.* **16**, 1836454. doi:10.1080/15592324.2020.1836454
- Krings, M., Kerp, H., Taylor, T. N. and Taylor, E. L. (2003). How Paleozoic vines and lianas got off the ground: On scrambling and climbing carboniferous-early permian pteridosperms. *Bot. Rev.* **69**, 204-224. doi:10.1663/0006-8101(2003)069[0204:HPVALG]2.0.CO;2
- Kumar, S., Stecher, G., Suleski, M. and Hedges, S. B. (2017). TimeTree: a resource for timelines, timetrees, and divergence times. *Mol. Biol. Evol.* **34**, 1812-1819. doi:10.1093/molbev/msx116
- Lammertsma, E. I., Boer, H. J. d., Dekker, S. C., Dilcher, D. L., Lotter, A. F. and Wagner-Cremer, F. (2011). Global CO2 rise leads to reduced maximum stomatal conductance in Florida vegetation. *Proc. Natl. Acad. Sci. USA* **108**, 4035-4040. doi:10.1073/pnas.1100371108
- Lampugnani, E. R., Khan, G. A., Somssich, M. and Persson, S. (2018). Building a plant cell wall at a glance. *J. Cell Sci.* **131**, jcs207373. doi:10.1242/jcs.207373
- Langmead, B. and Salzberg, S. L. (2012). Fast gapped-read alignment with Bowtie 2. *Nat. Methods* **9**, 357-359. doi:10.1038/nmeth.1923
- Leebens-Mack, J. H., Barker, M. S., Carpenter, E. J., Deyholos, M. K., Gitzendanner, M. A., Graham, S. W., Grosse, I., Li, Z., Melkonian, M., Mirarab, S. et al. (2019). One thousand plant transcriptomes and the phylogenomics of green plants. *Nature* **574**, 679-685. doi:10.1038/s41586-019-1693-2
- Licausi, F., Giorgi, F. M., Zenoni, S., Osti, F., Pezzotti, M. and Perata, P. (2010). Genomic and transcriptomic analysis of the AP2/ERF superfamily in *Vitis vinifera*. *BMC Genomics* **11**, 719. doi:10.1186/1471-2164-11-719
- Liu, Y., Wei, M., Hou, C., Lu, T., Liu, L., Wei, H., Cheng, Y. and Wei, Z. (2017). Functional characterization of populus PsnSHN2 in coordinated regulation of secondary wall components in tobacco. *Sci. Rep.* **7**, 42. doi:10.1038/s41598-017-00093-z

- Matasci, N., Hung, L.-H., Yan, Z., Carpenter, E. J., Wickett, N. J., Mirarab, S., Nguyen, N., Warnow, T., Ayyampalayam, S., Barker, M. et al.** (2014). Data access for the 1,000 Plants (1KP) project. *GigaScience* **3**, 17. doi:10.1186/2047-217X-3-17
- Matus, J. T., Aquea, F. and Arce-Johnson, P.** (2008). Analysis of the grape MYB R2R3 subfamily reveals expanded wine quality-related clades and conserved gene structure organization across *Vitis* and *Arabidopsis* genomes. *BMC Plant Biol.* **8**, 83. doi:10.1186/1471-2229-8-83
- Medina-Vega, J. A., Bongers, F., Poorter, L., Schnitzer, S. A. and Sterck, F. J.** (2021). Lianas have more acquisitive traits than trees in a dry but not in a wet forest. *J. Ecol.* **109**, 2367-2384. doi:10.1111/1365-2745.13644
- Melaragno, J. E., Mehrotra, B. and Coleman, A. W.** (1993). Relationship between endopolyploidy and cell size in epidermal tissue of *Arabidopsis*. *Plant Cell* **5**, 1661-1668. doi:10.2307/3869747
- Mello, F. N. A., Estrada-Villegas, S., DeFilippis, D. M. and Schnitzer, S. A.** (2020). Can functional traits explain plant coexistence? a case study with tropical lianas and trees. *Diversity* **12**, 397. doi:10.3390/d12100397
- Metsalu, T. and Vilo, J.** (2015). ClustVis: a web tool for visualizing clustering of multivariate data using principal component analysis and heatmap. *Nucleic Acids Res.* **43**, W566-W570. doi:10.1093/nar/gkv468
- Millard, P. S., Kragelund, B. B. and Burow, M.** (2019). R2R3 MYB transcription factors – functions outside the DNA-binding domain. *Trends Plant Sci.* **24**, 934-946. doi:10.1016/j.tplants.2019.07.003
- Momayyezi, M., McKown, A. D., Bell, S. C. S. and Guy, R. D.** (2020). Emerging roles for carbonic anhydrase in mesophyll conductance and photosynthesis. *Plant J.* **101**, 831-844. doi:10.1111/tpj.14638
- Nakano, Y., Yamaguchi, M., Endo, H., Rejab, N. A. and Ohtani, M.** (2015). NAC-MYB-based transcriptional regulation of secondary cell wall biosynthesis in land plants. *Front. Plant Sci.* **6**, 288. doi:10.3389/fpls.2015.00288
- Nevill, P. G., Howell, K. A., Cross, A. T., Williams, A. V., Zhong, X., Tonti-Filippini, J., Boykin, L. M., Dixon, K. W. and Small, I.** (2019). Plastome-wide rearrangements and gene losses in carnivorous *Droseraceae*. *Genome Biol. Evol.* **11**, 472-485. doi:10.1093/gbe/evz005
- Nguyen, N. H. and Cheong, J.-J.** (2018a). AtMYB44 interacts with TOPLESS-RELATED corepressors to suppress protein phosphatase 2C gene transcription. *Biochem. Biophys. Res. Commun.* **507**, 437-442. doi:10.1016/j.bbrc.2018.11.057
- Nguyen, N. H. and Cheong, J.-J.** (2018b). H2A.Z-containing nucleosomes are evicted to activate AtMYB44 transcription in response to salt stress. *Biochem. Biophys. Res. Commun.* **499**, 1039-1043. doi:10.1016/j.bbrc.2018.04.048
- Noir, S., Marrocco, K., Masoud, K., Thomann, A., Gusti, A., Bitrian, M., Schnitzler, A. and Genschik, P.** (2015). The control of *Arabidopsis thaliana* growth by cell proliferation and endoreplication requires the F-box protein FBL17. *Plant Cell* **27**, 1461-1476. doi:10.1105/tpc.114.135301
- Oh, S., Park, S. and Han, K.-H.** (2003). Transcriptional regulation of secondary growth in *Arabidopsis thaliana*. *J. Exp. Bot.* **54**, 2709-2722. doi:10.1093/jxb/erg304
- Onoda, Y., Wright, I. J., Evans, J. R., Hikosaka, K., Kitajima, K., Niinemets, I., Poorter, H., Tosens, T. and Westoby, M.** (2017). Physiological and structural tradeoffs underlying the leaf economics spectrum. *New Phytol.* **214**, 1447-1463. doi:10.1111/nph.14496
- Osnas, J. L. D., Lichstein, J. W., Reich, P. B. and Pacala, S. W.** (2013). Global leaf trait relationships: mass, area, and the leaf economics spectrum. *Science* **340**, 741-744. doi:10.1126/science.1231574
- Osunkoya, O. O., Boyne, R. and Scharaschkin, T.** (2014). Coordination and plasticity in leaf anatomical traits of invasive and native vine species. *Am. J. Bot.* **101**, 1423-1436. doi:10.3732/ajb.1400125
- Park, Y. B. and Cosgrove, D. J.** (2015). Xyloglucan and its interactions with other components of the growing cell wall. *Plant Cell Physiol.* **56**, 180-194. doi:10.1093/pcp/pcu204
- Phillips, O. L., Martínez, R. V., Arroyo, L., Baker, T. R., Killeen, T., Lewis, S. L., Malhi, Y., Mendoza, A. M., Neill, D., Vargas, P. N. et al.** (2002). Increasing dominance of large lianas in Amazonian forests. *Nature* **418**, 770. doi:10.1038/nature00926
- Punwani, J. A., Rabiger, D. S., Lloyd, A. and Drews, G. N.** (2008). The MYB98 subcircuit of the synergid gene regulatory network includes genes directly and indirectly regulated by MYB98. *Plant J.* **55**, 406-414. doi:10.1111/j.1365-313X.2008.03514.x
- Putz, F. E.** (1984). The natural history of lianas on Barro Colorado Island, Panama. *Ecology* **65**, 1713-1724. doi:10.2307/1937767
- Putz, F. E. and Mooney, H. A.** (ed). (1991). *The Biology of Vines*. Cambridge; New York: Cambridge University Press.
- Raudvere, U., Kolberg, L., Kuzmin, I., Arak, T., Adler, P., Peterson, H. and Vilo, J.** (2019). g:Profiler: a web server for functional enrichment analysis and conversions of gene lists (2019 update). *Nucleic Acids Res.* **47**, W191-W198. doi:10.1093/nar/gkz369
- Raven, P. H., Evert, R. F., Evert, R. F., Eichhorn, S. E. and Eichhorn, U. S. E.** (2005). *Biology of Plants*. Macmillan.
- Retallack, G. J.** (2001). A 300-million-year record of atmospheric carbon dioxide from fossil plant cuticles. *Nature* **411**, 287-290. doi:10.1038/35077041
- Rognes, T., Flouri, T., Nichols, B., Quince, C. and Mahé, F.** (2016). VSEARCH: a versatile open source tool for metagenomics. *PeerJ* **4**, e2584. doi:10.7717/peerj.2584
- Santiago, L. S. and Wright, S. J.** (2007). Leaf functional traits of tropical forest plants in relation to growth form. *Funct. Ecol.* **21**, 19-27. doi:10.1111/j.1365-2435.2006.01218.x
- Schnitzer, S.** (2005). A mechanistic explanation for global patterns of liana abundance and distribution. *Am. Nat.* **166**, 262-276. doi:10.1086/431250
- Schnitzer, S. A.** (2018). Testing ecological theory with lianas. *New Phytol.* **220**, 366-380. doi:10.1111/nph.15431
- Schnitzer, S. A. and Bongers, F.** (2002). The ecology of lianas and their role in forests. *Trends Ecol. Evol.* **17**, 223-230. doi:10.1016/S0169-5347(02)02491-6
- Schnitzer, S. A. and Carson, W. P.** (2010). Lianas suppress tree regeneration and diversity in treefall gaps. *Ecol. Lett.* **13**, 849-857. doi:10.1111/j.1461-0248.2010.01480.x
- Schnitzer, S. A., Dalling, J. W. and Carson, W. P.** (2000). The impact of lianas on tree regeneration in tropical forest canopy gaps: evidence for an alternative pathway of gap-phase regeneration. *J. Ecol.* **88**, 655-666. doi:10.1046/j.1365-2745.2000.00489.x
- Schnitzer, S. A., Mangan, S. A., Dalling, J. W., Baldeck, C. A., Hubbell, S. P., Ledo, A., Muller-Landau, H., Tobin, M. F., Aguilar, S., Brassfield, D. et al.** (2012). Liana abundance, diversity, and distribution on Barro Colorado Island, Panama. *PLoS ONE* **7**, e52114. doi:10.1371/journal.pone.0052114
- Shannon, P., Markiel, A., Ozier, O., Baliga, N. S., Wang, J. T., Ramage, D., Amin, N., Schwikowski, B. and Ideker, T.** (2003). Cytoscape: a software environment for integrated models of biomolecular interaction networks. *Genome Res.* **13**, 2498-2504. doi:10.1101/gr.1239303
- Shen, Q., Zhan, X., Yang, P., Li, J., Chen, J., Tang, B., Wang, X. and Hong, Y.** (2019). Dual activities of plant cGMP-dependent protein kinase and its roles in gibberellin signaling and salt stress. *Plant Cell* **31**, 3073-3091. doi:10.1105/tpc.19.00510
- Simão, F. A., Waterhouse, R. M., Ioannidis, P., Kriventseva, E. V. and Zdobnov, E. M.** (2015). BUSCO: assessing genome assembly and annotation completeness with single-copy orthologs. *Bioinformatics* **31**, 3210-3212. doi:10.1093/bioinformatics/btv351
- Soon, F.-F., Ng, L.-M., Zhou, X. E., West, G. M., Kovach, A., Tan, M. H. E., Suino-Powell, K. M., He, Y., Xu, Y., Chalmers, M. J. et al.** (2012). Molecular mimicry regulates ABA signaling by SnRK2 kinases and PP2C phosphatases. *Science* **335**, 85-88. doi:10.1126/science.1215106
- Stein, W. E., Berry, C. M., HERNICK, L. V. and Mannolini, F.** (2012). Surprisingly complex community discovered in the mid-Devonian fossil forest at Gilboa. *Nature* **483**, 78-81. doi:10.1038/nature10819
- Stelpflug, S. C., Sekhon, R. S., Vaillancourt, B., Hirsch, C. N., Buell, C. R., Leon, N. D. and Kaeppeler, S. M.** (2016). An expanded maize gene expression atlas based on RNA sequencing and its use to explore root development. *Plant Genome* **9**, plantgenome2015.04.0025. doi:10.3835/plantgenome2015.04.0025
- Stevens, G. C.** (1987). Lianas as structural parasites: the *Bursera simaruba* example. *Ecology* **68**, 77-81. doi:10.2307/1938806
- Stirberg, P., Liu, J.-P., Ward, S., Kendall, S. L. and Leyser, O.** (2012). Mutation of the cytosolic ribosomal protein-encoding RPS10B gene affects shoot meristematic function in *Arabidopsis*. *BMC Plant Biol.* **12**, 160. doi:10.1186/1471-2229-12-160
- Supuran, C. T.** (2018). Carbonic anhydrases and metabolism. *Metabolites* **8**, 25. doi:10.3390/metabo8020025
- Swenson, N. G. and Jones, F. A.** (2017). Community transcriptomics, genomics and the problem of species co-occurrence. *J. Ecol.* **105**, 563-568. doi:10.1111/1365-2745.12771
- Swenson, N. G., Iida, Y., Howe, R., Wolf, A., Umaña, M. N., Petprakob, K., Turner, B. L. and Ma, K.** (2017). Tree co-occurrence and transcriptomic response to drought. *Nat. Commun.* **8**, 1-9. doi:10.1038/s41467-017-02034-w
- Takenaka, A.** (1994). Effects of leaf blade narrowness and petiole length on the light capture efficiency of a shoot. *Ecol. Res.* **9**, 109-114. doi:10.1007/BF02347485
- Tamagnone, L., Merida, A., Parr, A., Mackay, S., Culianez-Macia, F. A., Roberts, K. and Martin, C.** (1998). The AmMYB308 and AmMYB330 transcription factors from *Antirrhinum* regulate phenylpropanoid and lignin biosynthesis in transgenic tobacco. *Plant Cell* **10**, 135-154. doi:10.1105/tpc.10.2.135
- Tang, H., Sezen, U. and Paterson, A. H.** (2010). Domestication and plant genomes. *Curr. Opin. Plant Biol.* **13**, 160-166. doi:10.1016/j.pbi.2009.10.008
- Tang, H., Cuevas, H. E., Das, S., Sezen, U. U., Zhou, C., Guo, H., Goff, V. H., Ge, Z., Clemente, T. E. and Paterson, A. H.** (2013). Seed shattering in a wild sorghum is conferred by a locus unrelated to domestication. *Proc. Natl. Acad. Sci. USA* **110**, 15824-15829. doi:10.1073/pnas.1305213110
- Tang, S., Lomsadze, A. and Borodovsky, M.** (2015). Identification of protein coding regions in RNA transcripts. *Nucleic Acids Res.* **43**, e78. doi:10.1093/nar/gkv227
- Taylor-Teeples, M., Lin, L., de Lucas, M., Turco, G., Toal, T. W., Gaudinier, A., Young, N. F., Trabucco, G. M., Veling, M. T., Lamothe, R. et al.** (2015). An *Arabidopsis* gene regulatory network for secondary cell wall synthesis. *Nature* **517**, 571-575. doi:10.1038/nature14099

- Thieme, C. J., Rojas-Triana, M., Stecyk, E., Schudoma, C., Zhang, W., Yang, L., Miñambres, M., Walthers, D., Schulze, W. X., Paz-Ares, J. et al. (2015). Endogenous Arabidopsis messenger RNAs transported to distant tissues. *Nature Plants* **1**, 15025. doi:10.1038/nplants.2015.25
- Tirumalai, V., Swetha, C., Nair, A., Pandit, A. and Shivaprasad, P. V. (2019). miR828 and miR858 regulate VvMYB114 to promote anthocyanin and flavonol accumulation in grapes. *J. Exp. Bot.* **70**, 4775-4792. doi:10.1093/jxb/erz264
- Tohge, T., Nishiyama, Y., Hirai, M. Y., Yano, M., Nakajima, J.-I., Awazuhara, M., Inoue, E., Takahashi, H., Goodenowe, D. B., Kitayama, M. et al. (2005). Functional genomics by integrated analysis of metabolome and transcriptome of Arabidopsis plants over-expressing an MYB transcription factor. *Plant J.* **42**, 218-235. doi:10.1111/j.1365-3113X.2005.02371.x
- Tohge, T., Kusano, M., Fukushima, A., Saito, K. and Fernie, A. R. (2011). Transcriptional and metabolic programs following exposure of plants to UV-B irradiation. *Plant Signal. Behav.* **6**, 1987-1992. doi:10.4161/psb.6.12.18240
- Umaña, M. N., Forero-Montaña, J., Nytech, C. J., Thompson, J., Uriarte, M., Zimmerman, J. and Swenson, N. G. (2019). Dry conditions and disturbance promote liana seedling survival and abundance. *Ecology* **100**, e02556.
- Vercruyse, J., Baekelandt, A., Gonzalez, N. and Inzé, D. (2020). Molecular networks regulating cell division during Arabidopsis leaf growth. *J. Exp. Bot.* **71**, 2365-2378. doi:10.1093/jxb/erz522
- Visser, M. D., Muller-Landau, H. C., Schnitzer, S. A., Kroon, H. D., Jongejans, E. and Wright, S. J. (2018). A host-parasite model explains variation in liana infestation among co-occurring tree species. *J. Ecol.* **106**, 2435-2445.
- von Mering, C., Jensen, L. J., Snel, B., Hooper, S. D., Krupp, M., Foglierini, M., Jouffre, N., Huynen, M. A. and Bork, P. (2005). STRING: known and predicted protein-protein associations, integrated and transferred across organisms. *Nucleic Acids Res.* **33**, D433-D437. doi:10.1093/nar/gki005
- Wang, H., Harrison, S. P., Prentice, I. C., Yang, Y., Bai, F., Togashi, H. F., Wang, M., Zhou, S. and Ni, J. (2018). The China Plant Trait Database: toward a comprehensive regional compilation of functional traits for land plants. *Ecology* **99**, 500. doi:10.1002/ecy.2091
- Wen, J., Xiong, Z., Nie, Z.-L., Mao, L., Zhu, Y., Kan, X.-Z., Ickert-Bond, S. M., Gerrath, J., Zimmer, E. A. and Fang, X.-D. (2013). Transcriptome sequences resolve deep relationships of the grape family. *PLoS ONE* **8**, e74394. doi:10.1371/journal.pone.0074394
- Wong, D. C. J., Schlechter, R., Vannozzi, A., Höll, J., Hmman, I., Bogs, J., Tornielli, G. B., Castellarin, S. D. and Matus, J. T. (2016). A systems-oriented analysis of the grapevine R2R3-MYB transcription factor family uncovers new insights into the regulation of stilbene accumulation. *DNA Res.* **23**, 451-466. doi:10.1093/dnares/dsw028
- Wright, I. J., Reich, P. B., Westoby, M., Ackerly, D. D., Baruch, Z., Bongers, F., Cavender-Bares, J., Chapin, T., Cornelissen, J. H. C., Diemer, M. et al. (2004). The worldwide leaf economics spectrum. *Nature* **428**, 821-827. doi:10.1038/nature02403
- Wright, S. J., Jaramillo, M. A., Pávon, J., Condit, R., Hubbell, S. P. and Foster, R. B. (2005). Reproductive size thresholds in tropical trees: variation among individuals, species and forests. *J. Trop. Ecol.* **21**, 307-315. doi:10.1017/S0266467405002294
- Wyka, T. P., Oleksyn, J., Karolewski, P. and Schnitzer, S. A. (2013). Phenotypic correlates of the lianescent growth form: a review. *Ann. Bot.* **112**, 1667-1681. doi:10.1093/aob/mct236
- Xue, T., Wang, D., Zhang, S., Ehltng, J., Ni, F., Jakab, S., Zheng, C. and Zhong, Y. (2008). Genome-wide and expression analysis of protein phosphatase 2C in rice and Arabidopsis. *BMC Genomics* **9**, 550. doi:10.1186/1471-2164-9-550
- Yu, Y.-T., Wu, Z., Lu, K., Bi, C., Liang, S., Wang, X.-F. and Zhang, D.-P. (2016). Overexpression of the MYB37 transcription factor enhances abscisic acid sensitivity, and improves both drought tolerance and seed productivity in Arabidopsis thaliana. *Plant Mol. Biol.* **90**, 267-279. doi:10.1007/s11103-015-0411-1
- Zambrano, J., Iida, Y., Howe, R., Lin, L., Umama, M. N., Wolf, A., Worthy, S. J. and Swenson, N. G. (2017). Neighbourhood defence gene similarity effects on tree performance: a community transcriptomic approach. *J. Ecol.* **105**, 616-626. doi:10.1111/1365-2745.12765
- Zambrano, J., Fagan, W. F., Worthy, S. J., Thompson, J., Uriarte, M., Zimmerman, J. K., Umaña, M. N. and Swenson, N. G. (2019). Tree crown overlap improves predictions of the functional neighbourhood effects on tree survival and growth. *J. Ecol.* **107**, 887-900. doi:10.1111/1365-2745.13075
- Zandalinas, S. I., Fichman, Y., Devireddy, A. R., Sengupta, S., Azad, R. K. and Mittler, R. (2020). Systemic signaling during abiotic stress combination in plants. *Proc. Natl. Acad. Sci. USA* **117**, 13810-13820. doi:10.1073/pnas.2005077117
- Zhang, L., Chen, Y., Ma, K., Bongers, F. and Sterck, F. J. (2019a). Fully exposed canopy tree and liana branches in a tropical forest differ in mechanical traits but are similar in hydraulic traits. *Tree Physiol.* **39**, 1713-1724. doi:10.1093/treephys/tpz070
- Zhang, S. B., Deng, Q. L. and Hao, Y. J. (2019b). Effects of high temperature and high light on photosystem II activity in leaves of two Bauhinia species. *Photosynthetica* **57**, 1094-1099. doi:10.32615/ps.2019.128
- Zhao, X., Harashima, H., Dissmeyer, N., Pusch, S., Weimer, A. K., Bramsiepe, J., Bouyer, D., Rademacher, S., Nowack, M. K., Novak, B. et al. (2012). A general G1/S-phase cell-cycle control module in the flowering plant Arabidopsis thaliana. *PLoS Genet.* **8**, e1002847. doi:10.1371/journal.pgen.1002847
- Zhao, F., Chen, W., Sechet, J., Martin, M., Bovio, S., Lionnet, C., Long, Y., Battu, V., Mouille, G., Monéger, F. et al. (2019). Xyloglucans and microtubules synergistically maintain meristem geometry and phyllotaxis. *Plant Physiol.* **181**, 1191-1206. doi:10.1104/pp.19.00608
- Zhong, R. and Ye, Z.-H. (2015). Secondary cell walls: biosynthesis, patterned deposition and transcriptional regulation. *Plant Cell Physiol.* **56**, 195-214. doi:10.1093/pcp/pcu140