

UCSF

UC San Francisco Previously Published Works

Title

Induction of the Angiogenic Phenotype by Hox D3

Permalink

<https://escholarship.org/uc/item/3nh5q4dq>

Journal

Journal of Cell Biology, 139(1)

ISSN

0021-9525

Authors

Boudreau, Nancy
Andrews, Catherine
Srebrow, Anabella
[et al.](#)

Publication Date

1997-10-06

DOI

10.1083/jcb.139.1.257

Peer reviewed

Induction of the Angiogenic Phenotype by Hox D3

Nancy Boudreau,* Catherine Andrews,* Anabella Srebrow,[‡] Ali Ravanpay,[‡] and David A. Cheresh*

*Department of Immunology and Vascular Biology, The Scripps Research Institute, La Jolla, California 92037; and

[‡]Life Sciences Division, Ernest Orlando Lawrence Berkeley National Laboratory, Berkeley, California 94720

Abstract. Angiogenesis is characterized by distinct phenotypic changes in vascular endothelial cells (EC). Evidence is provided that the *Hox D3* homeobox gene mediates conversion of endothelium from the resting to the angiogenic/invasive state. Stimulation of EC with basic fibroblast growth factor (bFGF) resulted in increased expression of *Hox D3*, integrin $\alpha\beta 3$, and the urokinase plasminogen activator (uPA). *Hox D3* antisense blocked the ability of bFGF to induce uPA and integrin $\alpha\beta 3$ expression, yet had no effect on EC cell

proliferation or bFGF-mediated cyclin D1 expression. Expression of *Hox D3*, in the absence of bFGF, resulted in enhanced expression of integrin $\alpha\beta 3$ and uPA. In fact, sustained expression of *Hox D3* in vivo on the chick chorioallantoic membrane retained EC in this invasive state and prevented vessel maturation leading to vascular malformations and endotheliomas. Therefore, *Hox D3* regulates EC gene expression associated with the invasive stage of angiogenesis.

ANGIOGENESIS requires coordinate changes in endothelial cell morphology and gene expression. In the resting vasculature, quiescent capillary endothelial cells are in contact with a laminin-rich basement membrane (BM)¹ and are nonmigratory. In response to angiogenic stimuli, including cytokines such as basic fibroblast growth factor (bFGF), tumor necrosis factor α , and vascular endothelial growth factor, vascular endothelial cells (EC) reenter the cell cycle and upregulate proteolytic activity to degrade the existing BM, facilitating their invasion into stromal tissue. These vascular sprouts then synthesize a new BM and undergo morphological reorganization into mature quiescent, lumen-containing capillaries.

Proteolysis of the BM, along with enhanced vascular permeability which accompanies angiogenesis, facilitates an influx of serum proteins including vitronectin, fibronectin, and fibrinogen, creating a provisional extracellular matrix on which EC migrate. Although not typically expressed by quiescent resting EC, angiogenic EC express high levels of integrin $\alpha\beta 3$, which can effectively bind this provisional matrix (Brooks et al., 1994; for review see Cheresh and Mecham, 1994). In fact, both matrix-degrad-

ing serine and metalloproteinases and integrin $\alpha\beta 3$ have been shown to play essential roles in new vessel formation, as inhibition of their respective activities will impair tumor- or cytokine-mediated angiogenesis (Mignatti et al., 1989; Brooks et al., 1994; Johnson et al., 1994; Min et al., 1996). The mechanism by which angiogenic cytokines coordinately upregulate expression of proteases and adhesion molecules involved in angiogenesis however is not known.

One class of transcriptional activators that have been linked to extensive tissue remodeling are the homeobox (*Hox*) genes. In addition to their role in embryonic development, the *Hox* genes have been shown to play a significant role in differentiation and gene expression in adult tissues (Lawrence and Largman, 1992; Takeshita et al., 1993; Savageau et al., 1995). Inappropriate *Hox* gene expression has also been linked to tumorigenic tissues (Friedmann et al., 1994; Redline et al., 1994). *Hox* genes are characterized by a highly conserved 180-bp DNA-binding domain known as the homeodomain, which interacts directly with DNA to activate transcription of genes (Desplan et al., 1985). Putative target genes for *Hox* DNA-binding proteins include other *Hox* genes and transcription factors, cell adhesion molecules, extracellular proteins, and growth factors (for reviews see Botas, 1993; and Edelman and Jones, 1993; Immergluck et al., 1990; Goomer et al., 1994; Taniguchi et al., 1995). Interestingly, in the genome, *Hox* and integrin receptor gene families colocalize in clusters, indicative of parallel, coordinate evolution, further supporting a link between these groups of genes associated with tissue patterning (Wang et al., 1995).

Address all correspondence to Nancy Boudreau, Department of Anatomy, Medical College of Virginia, 1101 E. Marshall Street, Richmond, VA 23298. Tel.: (804) 828-7887. Fax: (804) 828-9477. E-mail: nboudrea@nsc.vcu.edu

1. *Abbreviations used in this paper:* bFGF, basic fibroblast growth factor; BM, basement membrane; CAM, chorioallantoic membrane; EC, vascular endothelial cells; HUVEC, human umbilical vein endothelial cells; uPA, urokinase plasminogen activator.

Given the dramatic changes in cell-extracellular matrix interactions, EC morphology, and gene expression that occur during angiogenesis, we investigated expression of *Hox* genes and their role in endothelial cell behavior.

Materials and Methods

Cells and Culture Conditions

Experiments were conducted using primary human umbilical vein endothelial cells (HUVEC; Clonetics, San Diego, CA) or an immortalized HUVEC cell line (line 1998; American Type Culture Collection, Rockville, MD). HUVECs were routinely cultured in M199 plus 20% FCS and ECGS (Upstate Biotechnologies, Lake Placid, NY). The immortalized 1998 cell line was maintained in M199 plus 5% FCS. For experiments in which bFGF was added, HUVECs were maintained in M199 plus 5% FCS, while the 1998 cell line was maintained in M199 with 2% serum. Recombinant human bFGF was purchased from Upstate Biotechnologies, and also kindly supplied by Dr. Judith Abraham (Scios Nova Inc., Mountain View, CA). For experiments using basement membrane, 1×10^6 cells were seeded onto thick layers of Matrigel (Becton Dickinson, Bedford, MA). Chick embryo fibroblast isolation and maintenance of the viral packaging cell line Q4dh was performed as previously described (Stoker and Bissell, 1988).

Transfection of immortalized HUVEC or Q4dh cell lines was performed using calcium phosphate and stable transfectants selected using 800 or 400 $\mu\text{g/ml}$ G418, respectively (Sigma Chemical Co., St. Louis, MO). At least two independently selected pools of stably transfected cells were used for subsequent analysis.

Isolation of HOX Genes Expressed in EC

RT-PCR of HOX genes was performed using total RNA from primary HUVECs cultured in the presence or absence of BM. After reverse transcription with oligo-dT primers (Gene Amp; Perkin Elmer, Norwalk, CT), DNA was amplified using degenerate primers against the conserved homeodomain sequences as described by Friedman et al. (1994): forward primer 5'-GGAATTCCGARTNGARAARGARTT-3'; and reverse primer 5'-CCCAAGCTTRTTYTGRAACCADATYTT-3'. PCR reaction conditions include initial denaturation for 2 min at 95°C followed by 35 cycles at 95, 55, and 72°C for 1 min each plus a final incubation for 10 min at 72°C. In some instances, samples were reamplified for an additional 25 cycles using similar reaction conditions. Final PCR products were cloned into TA cloning vectors (Invitrogen, San Diego, CA) and positive clones amplified and Hox sequences identified by the dideoxy sequencing method of Sanger et al. (1977).

For quantitative PCR analysis of *Hox D3* mRNA, 1 μg of total RNA was reverse transcribed using oligo-dT primers and amplified for 30 cycles at 95, 60, and 72°C with *Hox D3* primers spanning a coding region to eliminate amplification of possible contaminating genomic DNA (forward primer [bp 1682–1705] 5'-TGGTCTGAACTCAGAGCAGCAGC-3' and reverse primer [bp 3962–3938] 5'-TCATGCGCCGGTCTGGAACCA-3'). This yielded the predicted 415-bp PCR product, which was confirmed by DNA sequencing. To normalize for amounts of starting RNA, equal volumes of reaction mixtures were amplified for 35 cycles at 95, 60, and 72°C for 1 min each using primers for human GAPDH; forward primer (bp 212–236) 5'-CCACCCATGGCAAATTCATGGCA-3'; and reverse primer (bp 787–811) 5'-TCTAGACGGCAGGTCCAGGTCCACC-3'; (Stratagene, La Jolla, CA). PCR products were visualized and isolated by running through 2% agarose gels containing 1 $\mu\text{g/ml}$ ethidium bromide.

Construction of Expression Vectors

Human genomic *Hox D3* DNA was a gift from Y. Taniguchi (Tokai School of Medicine, Bohseidai, Isehara, Kanagawa, Japan). A full length *Hox D3* cDNA was constructed by inserting the 415-bp PCR product, generated as described above, between the Pst I site (bp 1899) and the EcoRI site (bp 3853) in the genomic *Hox D3*. Expression vectors were constructed by inserting either the genomic or *Hox D3* cDNA between the KpnI and BamHI sites of pcDNA3 mammalian expression vector (Invitrogen). Antisense expression vectors were constructed by inserting the genomic DNA between the BamHI and HindIII sites of the pcDNA3 in the antisense orientation. For controls, cells were transfected with empty pcDNA3 vectors.

Chicken retroviral expression vectors were constructed by inserting either the *Hox D3* genomic DNA or cDNA between the ClaI and BamHI sites of the replication-defective retroviral vector CK (a gift from B. Vennstrom, European Molecular Biology Laboratory, Heidelberg, Germany). These vectors were then stably transfected into the packing cell line Q4dh to generate infectious virus (Stoker and Bissell, 1988). Production of infectious retrovirus was monitored by infecting chick embryo fibroblasts with supernatants from cultures of stably transfected packing cells as described by Stoker and Bissell (1988).

RNA Isolation and Northern Blot Analysis

Total RNA was extracted using the Quick-Prep Kit (Qiagen, Santa Clara, CA). For cells cultured on BM, cells were first detached from Matrigel using Matrisperse (Becton Dickinson) and RNA isolated as described above. 10 or 20 μg total RNA was run through 1% agarose formaldehyde gels and transferred to Hybond-N membranes (Amersham Intl., Arlington Heights, IL) according to standard procedures. Membranes were hybridized using [³²P]dCTP-labeled cDNA probes and exposed to Kodak X-Omat film at -70°C. cDNA probes for human $\beta 3$ and $\beta 5$ integrin were from E. Filardo (Brown University, Providence, RI). cDNA probe for human urokinase plasminogen activator (uPA) was kindly provided by Graham Parry (The Scripps Research Institute, La Jolla, CA).

Western Blots

Cultured cells were lysed in buffer containing 1 M NaCl, 10 mM Tris, pH 7.5, 1% Triton X-100 and aprotinin, PMSF, and leupeptin. Total protein concentration was determined using the BCA reagent kit (Pierce, Rockford, IL), and a total of 10 μg was run on 10 or 12% SDS-PAGE under reducing conditions. Gels were transferred to Immobilon nylon membranes (Millipore, Bedford, MA) and blocked in TBS plus 5% milk proteins. Blots were probed using either 1:200 dilution of monoclonal anti-human cyclin D1 (sc-246; Santa Cruz Biotechnologies, Santa Cruz, CA) or 10 $\mu\text{g/ml}$ polyclonal rabbit antihuman $\beta 3$ integrin (AP-3) followed by a 1:1,000 dilution of either goat anti-rabbit or goat anti-mouse HRP (Biosource International, Camarillo, CA) and visualized by chemiluminescence (ECL; Amersham Intl.).

Adhesion Assays

Cells were removed by incubation with versene (0.5 M EDTA in PBS, pH 7.4) and resuspended in FBM media (Clonetics Corp., San Diego, CA) supplemented with 0.2 M MnCl_2 . A total of 5×10^5 cells was seeded into each well of 24-well culture dishes (Costar Corp., Cambridge, MA) that had been previously coated for 1 h at 37°C with either heat-denatured BSA (1%) or 10 $\mu\text{g/ml}$ human fibrinogen (Sigma Chemical Co.). In some cases 25 $\mu\text{g/ml}$ of a function blocking anti-human $\alpha\text{v}\beta 3$ integrin (mAb LM609) were added along with cells. After extensive washing, cells were fixed in 2% ethanol and stained with 1% crystal violet. The number of adherent cells was quantitated by absorbance at 600 nm.

BrdU Incorporation

To determine the effect of *Hox D3* on cell proliferation, the rate of DNA synthesis was established by measuring BrdU incorporation in control and EC transfected with either *Hox D3* or *Hox D3* antisense expression vectors. After incubation for 4 or 12 h with 10 μM BrdU, cells were fixed with 70% ethanol and stained with an anti-BrdU kit (Boehringer Mannheim, Indianapolis, IN) followed by staining with 0.5 $\mu\text{g/ml}$ DAPI (4,6 diamidino-2-phenylindole; Sigma Chemical Co.). The percentage of BrdU-positive nuclei was determined by counting at least six different fields in each of the cell types tested.

Chick Chorioallantoic Membrane Assay

All assays were performed in 10-d-old pathogen-free embryos (SPAFAS). Briefly, the chorioallantoic membranes (CAMs) were prepared as previously described by Brooks et al. (1994). Q4dh virus-producing cells were trypsinized, and a total of 5×10^6 cells were resuspended in 25 μl serum-free M199 and seeded onto the membranes and embryos incubated at 39°C. After 3 d, CAMs were harvested by washing in PBS and fixed for 30 min in 2% paraformaldehyde followed by washing in 0.1 M glycine/PBS. CAMs were embedded into embedding medium (OCT; Miles, Elkhart, IN), flash frozen in liquid nitrogen, and stored at -80°C. 5- μm sections were prepared and mounted on slides for immunohistochemistry.

Immunohistochemistry

Sections were briefly fixed in 100% acetone and equilibrated with PBS. After blocking in PBS plus 5% BSA, sections were incubated with either 5 μ g/ml monoclonal anti-human $\alpha\beta 3$ (LM609) or a 1:1,000 dilution of polyclonal rabbit anti-human von Willebrand Factor (BioGenex, San Ramon, CA). Goat anti-mouse-rhodamine or goat anti-rabbit-FITC (Biosource International, Camarillo, CA) were used as secondary antibodies. Sections were subsequently mounted using Fluoromount (Southern Biotechnologies, Birmingham, AL).

In Situ Hybridization

Hox D3 sense and antisense digoxigenin-labeled RNA probes were generated by linearizing the vector pCR II (Invitrogen) containing the 415-bp *Hox D3* cDNA (generated by RT-PCR described above) and incubating with T7 or SP6 RNA polymerase and digoxigenin-conjugated dUTP (Genius; Boehringer Mannheim). In situ hybridization was performed on 5- μ m cryosections mounted on siliconized slides (Sigma Chemical Co.). Sections were fixed in 4% paraformaldehyde for 20 min and dehydrated in 30, 70, and 100% ethanol for 2 min each and hybridized overnight at 45°C with 800 ng/ml of *Hox D3* riboprobes in 50% formamide, 10% dextran sulfate, 1% blocking reagent (DIG nucleic acid detection kit; Boehringer Mannheim), 300 μ g/ml yeast tRNA (Sigma Chemical Co.), 3 mM NaCl, 10 mM Tris, pH 7.5, and 1 mM EDTA. After washing in 0.2 \times SSPE at 50°C for 2 h, sections were incubated overnight with a 1:500 dilution of HRP-conjugated antibodies against digoxigenin and color developed using NBT/BCIP (DIG nucleic acid detection kit; Boehringer Mannheim). Nonspecific hybridization was assessed using *Hox D3* sense riboprobes.

Results

Hox Gene Expression and the Angiogenic Phenotype of EC

EC cultured on basement membrane adopt a distinct morphology reminiscent of capillaries in vivo (Fig. 1 A, + BM), withdraw from the cell cycle, and cease DNA synthesis within 24 h (Kubota et al., 1988). This “differentiated phenotype” contrasts the characteristic cobblestone morphology associated with proliferating EC cultured in the absence of BM (Fig. 1 A, -BM). RT-PCR of mRNA from cultured EC detected the presence of a number of *Hox* gene mRNA's including *Hox* A4, B3, B4, B5, and D3 (data not shown). Previous studies have linked *Hox D3* with expression of $\beta 3$ integrin mRNA in erythroleukemia cells (Tanaguchi et al., 1995). This $\beta 3$ subunit is common to integrin $\alpha\beta 3$, which is highly expressed by angiogenic EC (Brooks et al., 1994), and prompted us to examine whether *Hox D3* expression was related to the expression of $\alpha\beta 3$ on EC. We therefore performed quantitative RT-PCR analysis of EC cultured in the presence (+) or absence (-) of BM for 36 h. As shown in Fig. 1 B, *Hox D3* expression was detected in proliferating EC but not in quiescent EC cultured on BM. Northern and Western blot analysis also shows that high levels of both $\beta 3$ integrin mRNA and protein were preferentially expressed by proliferating EC. Similarly, uPA mRNA was also highly expressed in proliferating but not quiescent EC (Fig. 1 C). Thus, while quiescent EC do not express detectable levels of *Hox D3*, $\beta 3$ integrin, or uPA mRNA, EC in the absence of BM express *Hox D3* and genes associated with the angiogenic phenotype.

Hox D3 Induces $\beta 3$ Integrin and uPA mRNA but Does Not Influence EC Proliferation

To determine whether the expression of *Hox D3* influ-

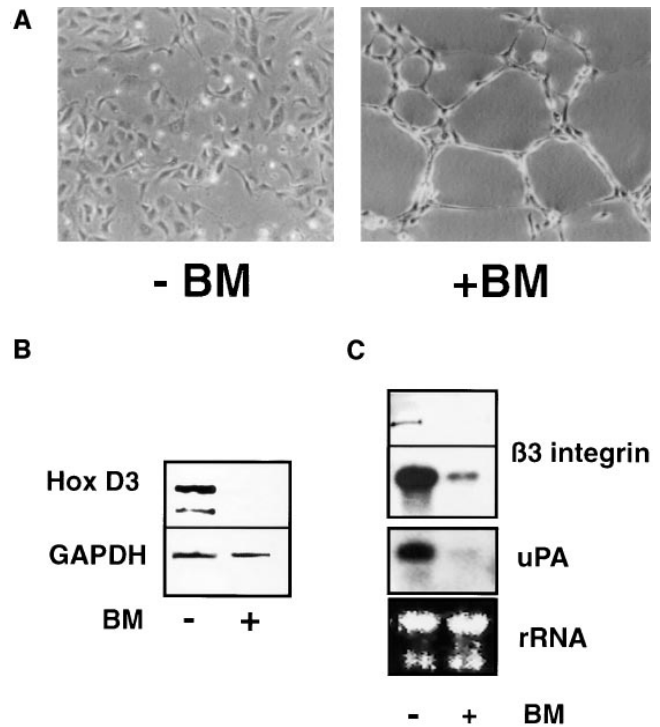


Figure 1. Expression of *Hox D3*, $\beta 3$ integrin, and uPA in quiescent and proliferative EC. (A) Morphology of HUVEC cultured in the presence (+) or absence (-) of reconstituted BM after 24 h in M199 containing 5% FCS. (B) RT-PCR of 1 μ g mRNA from HUVEC cultured for 48 h with (+) or without (-) reconstituted BM using primers for *Hox D3* or GAPDH. (C) Western (top) and Northern (bottom) blot analysis of integrin $\beta 3$ expression in HUVEC cultured in the presence (+) or absence (-) of BM for 48 h. Northern blots were reprobed for uPA mRNA expression. The bottom panel shows ethidium bromide staining of total RNA loaded in the corresponding gel.

ences expression of genes associated with the angiogenic phenotype of EC, a HUVEC cell line was stably transfected with a *Hox D3* expression vector. Northern blot analysis shows that HUVECs overexpressing *Hox D3* have significantly higher levels of steady-state $\beta 3$ integrin and uPA mRNA levels as compared to cells transfected with control vectors. In contrast, mRNA encoding integrin $\beta 5$, which is not upregulated during angiogenesis, did not differ in control or *Hox D3*-transfected cells (Fig. 2 A). To establish whether *Hox D3* was required for EC expression of $\beta 3$ integrin and uPA, HUVECs were stably transfected with *Hox D3* antisense expression vectors. Compared to control-transfected cells, baseline levels of both $\beta 3$ integrin and uPA mRNA were significantly reduced in cells expressing *Hox D3* antisense. In contrast, levels of $\beta 5$ integrin mRNA were not influenced by expression of *Hox D3* antisense (Fig. 2 B).

The *Hox D3*-mediated changes in expression of integrin $\beta 3$ mRNA also resulted in corresponding changes in surface expression of functional $\alpha\beta 3$ integrin. We compared the ability of EC overexpressing *Hox D3* or antisense against *Hox D3* to adhere to fibrinogen, a ligand for $\alpha\beta 3$ on endothelial cells (Cheresh et al., 1989). EC expressing antisense against *Hox D3* displayed significantly reduced

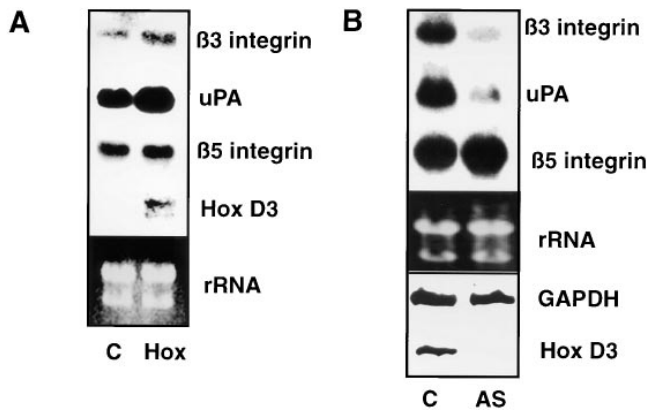


Figure 2. Influence of *Hox D3* on $\beta 3$ integrin and uPA expression in endothelial cells. (A) Northern blot analysis of $\beta 3$ integrin, $\beta 5$ integrin, uPA, and Hox D3 mRNA levels from 20 μg total RNA from immortalized HUVEC stably transfected with control (C) or Hox D3 (*Hox*) expression vectors. The lower panel shows ethidium bromide staining of total RNA loaded for each sample in the corresponding gel. (B) Northern blot analysis of $\beta 3$ integrin, $\beta 5$ integrin, and uPA mRNA expression levels from immortalized HUVECS transfected with control (C) or antisense expression vectors for Hox D3 (AS). RNA (20 μg) from each sample was loaded, and total RNA was visualized by ethidium bromide staining of the corresponding gel. The lower box shows RT-PCR of 1 μg total RNA from cells transfected with control (C) or antisense expression vectors against Hox D3 (AS) using primers for Hox D3 or GAPDH.

capacity to adhere to fibrinogen, compared to control cells (Fig. 3 A), whereas overexpressing *Hox D3* increased EC adhesion to fibrinogen (Fig. 3 A). Treatment of cells with LM609, a function-blocking antibody against $\alpha\beta 3$ (Cheresh, 1987), resulted in a complete inhibition of the fibrinogen-mediated attachment of these cells (data not shown). Thus, *Hox D3* regulates the functional expression of $\alpha\beta 3$ on endothelial cells.

The fact that angiogenesis is often accompanied by EC proliferation prompted us to examine whether Hox D3 also influenced the rate of EC growth. We therefore compared DNA synthesis, as determined by BrdU incorporation, in control EC and EC transfected with Hox D3 or Hox D3 antisense expression vectors. In contrast to the Hox D3-induced changes in expression of integrin $\beta 3$ and uPA described above, no differences in DNA synthesis were observed between control EC, EC expressing Hox D3, or antisense against Hox D3 (Fig. 3 B). Therefore, while *Hox D3* antisense can influence the expression of integrin $\alpha\beta 3$ and uPA in EC it apparently does not directly influence the proliferation of these cells.

Hox D3 Mediates bFGF-induced Expression of $\beta 3$ Integrin and uPA but Not Cyclin D1 in EC

The angiogenic cytokine bFGF leads to expression of both uPA and $\beta 3$ integrin in EC, which subsequently contribute to the invasive properties of EC during the early stages of angiogenesis (Moscatelli et al., 1985; Enenstein et al., 1992; Brooks et al., 1994; Sepp et al., 1994). To determine whether *Hox D3* could influence the bFGF-mediated in-

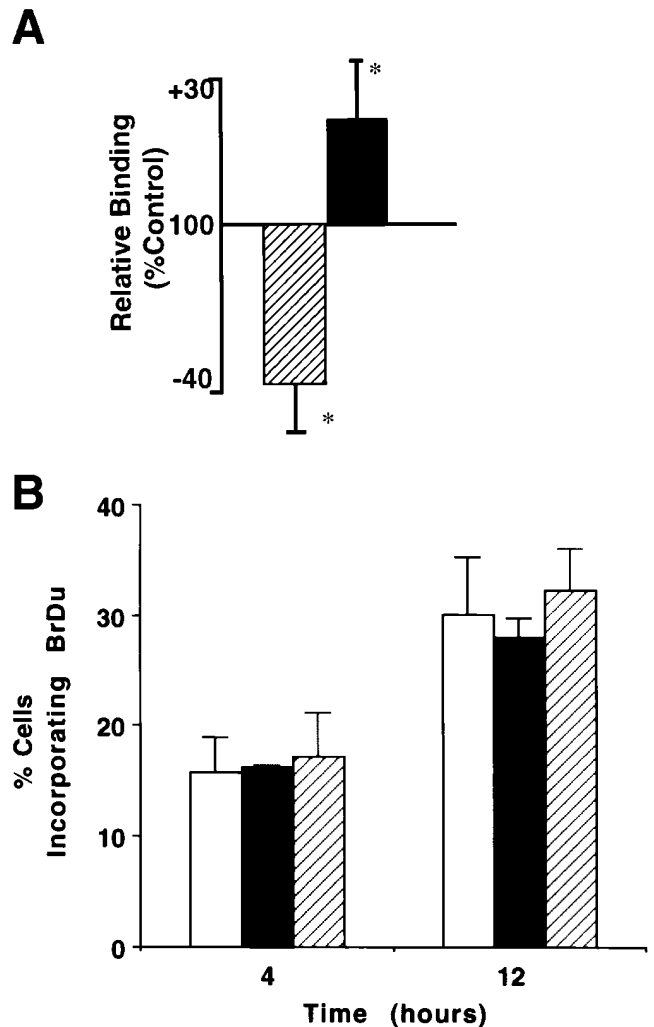


Figure 3. Effects of *Hox D3* sense and antisense expression on EC adhesion and proliferation. (A) Adhesion to microtitre wells coated with 10 $\mu\text{g}/\text{ml}$ fibrinogen by EC transfected with Hox D3 sense (■) or antisense (▨) expression vectors. Adhesion after 30 min was assessed by absorbance at 600 nm and expressed as a percentage of adhesion displayed by control-transfected EC ($n = 3$). * $P < 0.05$. (B) BrdU incorporation in control-transfected EC (□), Hox D3-overexpressing cells (■), or cells expressing antisense against Hox D3 (▨). Cells were labeled for 4 or 12 h with 10 mM BrdU. The percentage of cells staining positive for BrdU was assessed by counting at least six different fields containing a total of at least 400 cells each.

duction of integrin $\alpha\beta 3$ and uPA, EC were made quiescent by culturing on BM and treating with or without bFGF and analyzed for expression of mRNA encoding these proteins. As shown in Fig. 4, exposure of HUVECs to bFGF led to an increase in *Hox D3* expression after 8 h, which was accompanied by increased $\beta 3$ integrin and uPA steady-state mRNA levels by 24 h (Fig. 4, A and B). In contrast, in EC expressing antisense against *Hox D3*, the ability of bFGF to induce high levels of expression of $\beta 3$ integrin and uPA mRNA expression was attenuated. Importantly, integrin $\beta 5$ mRNA was not altered in either the control or antisense-transfected cells in the presence or absence of bFGF (Fig. 4, A and B).

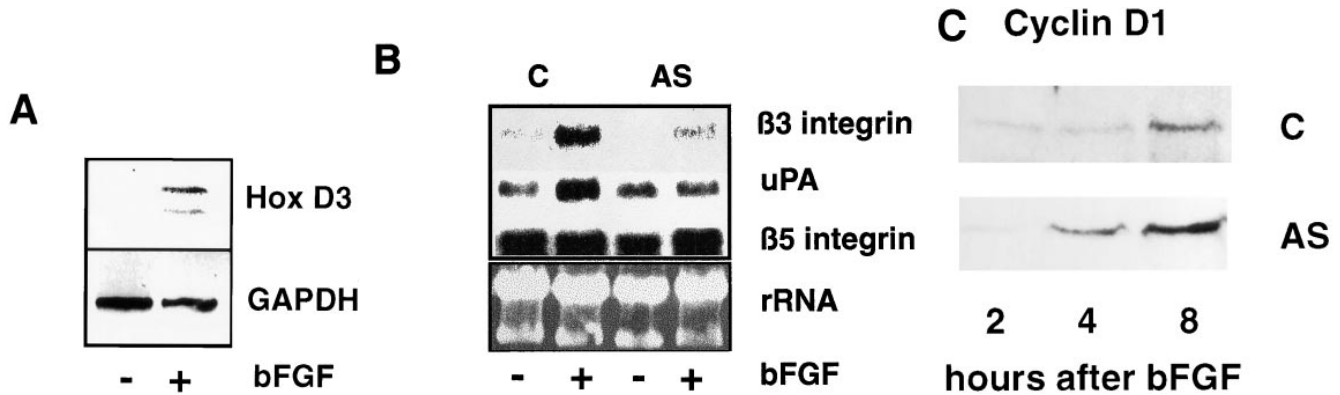


Figure 4. *Hox D3* mediates bFGF-induced expression of $\beta 3$ integrin and uPA. (A) RT-PCR of 1 μ g total RNA from HUVEC 24 h after treatment with 20 ng/ml bFGF (+bFGF) using primers for *Hox D3* or GAPDH. (B) Northern blot analysis of $\beta 3$ integrin, $\beta 5$ integrin, and uPA mRNA levels in HUVEC transfected with control plasmid (C) or antisense against *Hox D3* (AS) after 24 h with (+) or without (–) addition of 20 ng/ml bFGF. (C) Western blot of cyclin D1 in immortalized HUVEC transfected with control or antisense against *Hox D3*. After 24 h in serum-free M199, samples were collected at 2, 4, and 8 h after addition of 20 ng/ml bFGF. 10 μ g total cell lysate from each time point was separated on 12% SDS-PAGE, transferred to nylon membranes, and probed with a polyclonal antibody against human cyclin D1.

Although bFGF can also act as an endothelial cell mitogen, expressing *Hox D3* antisense had no effect on bFGF's ability to induce cyclin D1 in EC (Fig. 4 C). Thus *Hox D3* appears to mediate bFGF-induced expression of $\beta 3$ integrin and uPA but does not directly influence endothelial cell cycle progression. This is consistent with the observation that *Hox D3* antisense had no effect on EC proliferation (Fig. 3 B). These findings indicate that *Hox D3* appears to influence EC genes important for invasion but not proliferation.

Sustained Expression of *Hox D3* In Vivo Results in Vascular Malformations and Development of Endotheliomas

During the late stages of angiogenesis, integrin $\alpha v\beta 3$ and uPA are down regulated as EC reestablish an intact BM and form a lumen, suggesting that *Hox D3* may be required only during the initial stages of angiogenesis. Maintaining expression of *Hox D3* therefore might be expected to prolong expression of an invasive phenotype and interfere with normal vascular maturation and/or remodelling. To test this possibility, we constructed replication-defective avian retroviral vectors designed to constitutively express human *Hox D3* in vivo. Transfection of a transformed viral packaging cell line Q4dh with *Hox D3* proviral vectors yielded a retrovirus capable of infecting proliferating embryonic chick cells and driving expression of human *Hox D3* in these cells. When grafted onto 10-d chick embryo CAM's, transformed virus-producing Q4dh cells generate solid tumors in these animals. The continued production of infectious virus leads to infection of adjacent, proliferating cells including tumor-associated EC. As shown in Fig. 5 A, maintenance of *Hox D3* expression in these tissues caused blood vessel malformations, reminiscent of endotheliomas, which appeared as abnormal capillary-like structures several times greater in diameter than large capillaries and were filled with hematopoietic cells. A majority of the EC and certain hematopoietic cells within these endotheliomas remained positive for $\alpha v\beta 3$, providing evi-

dence that *Hox D3* was active in these tissues (Fig. 5 B). To confirm the presence of *Hox D3* in these vascular structures, we performed in situ hybridization using probes that detect retrovirally produced human *Hox D3* but do not detect endogenous chick *Hox* genes. Retroviral-mediated *Hox D3* expression was observed in a wide variety of tissues including epithelium, connective tissue, hematopoietic cells, and endothelial cells (Fig. 5 C). In contrast to the widespread viral infection and expression of *Hox D3*, $\alpha v\beta 3$ integrin was only detected in EC and some hematopoietic cells, suggesting this expression was highly specific.

These vascular malformations or endotheliomas ultimately resulted in the formation of large hemorrhagic zones within the tumors generated by 15/18 *Hox D3*-infected embryos, but was not observed in tumors of the control embryos (Fig. 6, A and B). H&E staining of sectioned *Hox D3*-infected tissue showed large endothelial-lined cysts filled with hematopoietic cells, many of which had hemorrhaged (Fig. 6 D). In contrast, tumors producing control virus showed normal tumor-induced angiogenesis (Fig. 6 C). These findings not only establish a role for *Hox D3* in EC function but also emphasize the requirement for tightly regulated expression of *Hox D3* during the early events of angiogenesis.

Discussion

During embryonic development, normal tissue patterning depends upon temporally and spatially restricted expression of *Hox* genes. Evidence is presented in this report that patterning of the vasculature during angiogenesis is affected by expression of the *Hox D3* homeobox gene in EC. We show that quiescent EC in contact with a BM express minimal levels of *Hox D3*, integrin $\alpha v\beta 3$, and uPA. However, exposure of EC to the angiogenic cytokine bFGF leads to increased levels of *Hox D3*, resulting in the functional expression of the angiogenic-promoting genes integrin $\beta 3$ and uPA in these cells.

Our findings that prolonged expression of *Hox D3* results in abnormal vascular morphology also emphasizes

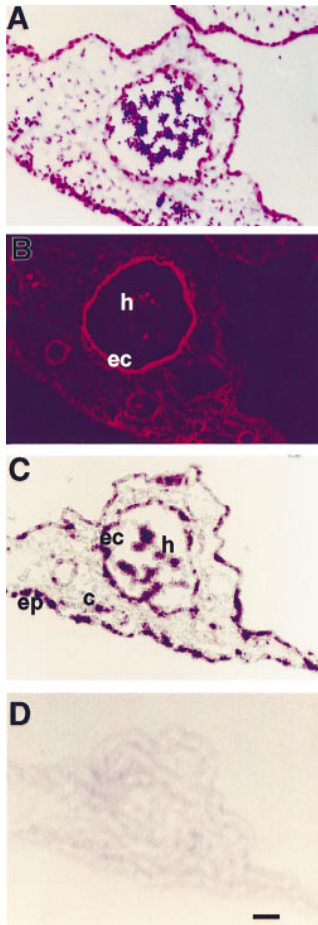


Figure 5. Colocalization of Hox D3 and $\alpha v\beta 3$ integrin in endotheliomas in vivo. (A) H&E-stained cross-section of tissue infected by Hox D3-expressing retrovirus shows an abnormally large capillary-like structure filled with erythrocytes. (B) Immunofluorescent staining with LM609 against $\alpha v\beta 3$ in the corresponding serial section shows strong positive staining in both the endothelial component (ec) of this vascular structure and in hematopoietic cells (h) contained within. (C) In situ hybridization of retrovirally expressed Hox D3 in corresponding serial section showing widespread expression in epithelium (ep), endothelial cells (ec), connective tissue (c), and hematopoietic cells (h). (D) Control in situ hybridization in a serial section performed with a sense riboprobe for Hox D3. Bar, 20 μm .

the requirement for tightly regulated expression of *Hox* genes in EC. Previous studies have linked sustained expression of angiogenic mediators, including bFGF and uPA with vascular tumors (Takahashi et al., 1994; Hatva et al., 1996; Kraling et al., 1996). In vivo, transgenic mice expressing polyoma middle T oncogene develop endothelial tumors, and in culture, these transformed EC form cystic vascular structures reminiscent of endothelioma, a phenotype that can be reversed by inhibiting uPA activity (Bautch et al., 1987; Montesano et al., 1990). In addition, embryonic chick cells infected with *v-src*, a downstream effector of FGF, show elevated uPA activity, and *v-src* infection of chick endothelial cells in vivo results in endotheliomas (Sullivan and Quigley, 1986; Stoker et al., 1990). Thus, while increased uPA activity is involved in normal capillary remodeling, chronic expression driven by *Hox D3* would be expected to prevent EC from establishing basement membranes, forming patent vessels with lumens and resuming a quiescent, differentiated phenotype. Furthermore, the sustained expression of integrin $\alpha v\beta 3$ provides the necessary means for EC to adhere, migrate, and survive in this angiogenic environment and thereby may enhance the activity of matrix-degrading serine and metalloproteinases, which interact with this integrin (Brooks et al., 1996; Strömblad et al., 1996).

Previous studies have linked FGF to the induction of *Hox D* genes during embryonic limb development, although the precise targets of *Hox D* gene activity have not been identified (Duprez et al., 1996). In this report it is apparent that *Hox D3* induction of integrin $\alpha v\beta 3$ is tissue specific, since this integrin was not detected in epithelial tissues expressing human *Hox D3*. In fact, endogenous

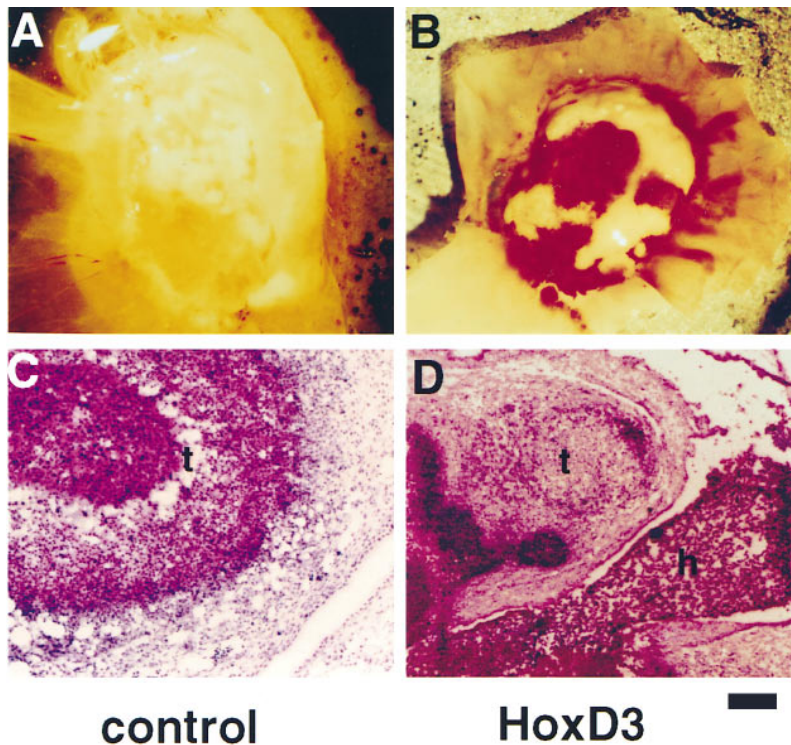


Figure 6. Effect of retroviral-mediated expression of Hox D3 in chick embryos. (A and B) Morphology of tumors generated 3 d after grafting of QT6 cells producing control or Hox D3-expressing retrovirus onto 10 d chick CAMs. (C and D) H&E staining in tissue cross-sections from tumors (t) and vasculature produced by cells shedding control or Hox D3-expressing retrovirus. Note the large hemorrhagic region containing hematopoietic cells (h) adjacent to tumor tissue in the Hox D3-infected tissue. Bar, 50 μm .

Hox D3 is expressed in human skin epithelium, yet this tissue does not express $\alpha\beta 3$ (Detmer et al., 1993; Brooks et al., 1994; Brown et al., 1994; Gailit et al., 1994). We also observed that quiescent vessels in the skin do not express *Hox D3* (Boudreau, N., unpublished observations). However, EC and certain hematopoietic cells infected with *Hox D3*-expressing retrovirus subsequently stained positively for $\alpha\beta 3$. *Hox D3* has previously been shown to induce expression of the $\beta 3$ subunit of the $\alpha\text{IIb}\beta 3$ platelet adhesion receptor in cultured human erythroleukemia cells which can be induced to differentiate to erythroid cells (Taniguchi et al., 1995). Thus, the ability of *Hox D3* to mediate expression of the $\beta 3$ integrin subunit may be restricted to cells of the hematopoietic/angioblast lineage which arise from common blood islands during embryogenesis (Risau, 1995).

We have also shown that *Hox D3* antisense blocks the bFGF-induced expression of integrin $\beta 3$ and uPA mRNA, yet has no effect on bFGF-induced expression of cyclin D1 in these cells. Furthermore, we have shown that *Hox D3* does not directly influence the rate of cell proliferation, and together these results suggest that these aspects of angiogenesis are differentially regulated. These observations are also supported by studies showing *Hox D3* overexpression had no effect on cell proliferation (Taniguchi et al., 1995). Therefore in EC, *Hox D3* appears to selectively regulate the expression of genes that contribute to extracellular matrix remodeling during angiogenesis.

Although both the integrin $\beta 3$ and uPA promoters contain several potential *Hox*-binding consensus sequences, the complex relationship between *Hox* genes makes it difficult to predict whether *Hox D3* acts alone or in combination with sequentially activated *Hox* genes to induce expression of these angiogenic effectors. For example, studies with compound mutants of *Hox D3* and *A3*, suggests that paralogous *Hox* genes act in a synergistic manner to influence tissue patterning (Condie and Capecchi, 1994). Similarly, activation or inhibition of the paralogous *Hox B3* gene, which is also expressed in EC, modifies expression of several other *Hox* genes including *D3* (Faiella et al., 1994). Nonetheless, in EC, expression of *Hox D3* is sufficient to convert quiescent EC to an angiogenic/invasive state. This is supported by the observation that *Hox D3* antisense prevents bFGF-mediated expression of both $\beta 3$ integrin and uPA in these cells. Our findings also reveal that temporally restricted expression of *Hox D3* is required for normal angiogenesis since prolonged expression of *Hox D3* maintains the angiogenic/invasive EC phenotype, thereby disrupting normal vascular remodeling.

The authors wish to thank Drs. Marlene Rabinovitch, Connie Myers, and especially Mina Bissell for critical reading of the manuscript and helpful discussions. We also thank Brian Eliceiri for help with graphics and Dr. Judith Abraham for providing bFGF used in these studies.

This work was supported by National Institutes of Health grant numbers HL54444 to D.A. Cheresch and Department of Energy grant number DEAC03-76-SF00098 to Mina J. Bissell, in whose laboratory this work was initiated. N. Boudreau was supported by a fellowship from the Joseph Drown Foundation. This is manuscript number 10482-IMM from the Scripps Research Institute.

Received for publication 23 January 1997 and in revised form 16 July 1997.

References

- Bautch, V.L., S. Toda, J.A. Hassell, and D. Hanahan. 1987. Endothelial cell tumors develop in transgenic mice carrying polyoma middle T oncogene. *Cell*. 51:529-538.
- Botas, J. 1993. Control of morphogenesis and differentiation by *HOM/Hox* genes. *Curr. Opin. Cell Biol.* 5:1015-1022.
- Brooks, P.C., R.A.F. Clark, and D.A. Cheresch. 1994. Requirement of vascular integrin $\alpha\beta 3$ for angiogenesis. *Science (Wash. DC)*. 264:569-571.
- Brooks, P.C., S. Strömblad, L. Sanders, T.L. von Schalscha, R.T. Aimes, W.G. Stetler-Stevenson, J.P. Quigley, and D.A. Cheresch. 1996. Localization of matrix metalloproteinase MMP-2 to the surface of invasive cells by interaction with integrin $\alpha\beta 3$. *Cell*. 85:683-693.
- Brown, W.M., L. Zhou, and G.R. Taylor. 1994. The nucleotide sequence of the murine *Hox D3* gene reveals extensive identity with the human protein. *Biochim. Biophys. Acta*. 1219:219-222.
- Cheresch, D.A. 1987. Human endothelial cells synthesize and express an Arg-Gly-Asp-directed adhesion receptor involved in attachment to fibrinogen and von Willebrand factor. *Proc. Natl. Acad. Sci. USA*. 84:6471-6475.
- Cheresch, D.A., and R.P. Mecham. 1994. Preface. In *Integrins: Molecular and Biological Responses to the Extracellular Matrix*. D.A. Cheresch and R.P. Mecham, editors. Academic Press, San Diego, CA. xi-xiv.
- Cheresch, D.A., J.W. Smith, H.M. Cooper, and V. Quaranta. 1989. A novel vitronectin receptor integrin ($\alpha\beta x$) is responsible for distinct adhesive properties of carcinoma cells. *Cell*. 57:59-69.
- Condie, B.G., and M.R. Capecchi. 1994. Mice with targeted disruptions in the paralogous genes *hoxa-3* and *hoxd-3* reveal synergistic interactions. *Nature (Lond.)*. 370:304-307.
- Desplan, C., J. Theis, and P.H. O'Farrel. 1985. The *Drosophila* developmental gene *engrailed* encodes a sequence specific DNA binding protein. *Nature (Lond.)*. 318:630-635.
- Detmer, K., H.J. Lawrence, and C. Largman. 1993. Expression of class I homeobox genes in fetal and adult murine skin. *J. Invest. Dermatol.* 101:517-522.
- Dubois-Stringfellow, N., L. Kolpack-Martindale, V.L. Bautch, and R. G. Azizkhan. 1994. Mice with hemangiomas induced by transgenic endothelial cells. *Am. J. Pathol.* 144:96-806.
- Duprez, D.M., K. Kostakopoulou, P.H. Francis-West, C. Tickle, and P.M. Brickell. 1996. Activation of *Fgf-4* and *Hox D* gene expression by BMP-2 expressing cells in the developing chick limb. *Development*. 122:1821-1828.
- Edelman, G.M., and F.S. Jones. 1993. Outside and downstream of the homeobox. *J. Biol. Chem.* 268:20683-20686.
- Enestein, J., N.S. Waleh, and R.H. Kramer. 1992. Basic FGF and TGF β differentially modulate integrin expression of human microvascular endothelial cells. *Exp. Cell Res.* 203:499-503.
- Faiella, A., V. Zappavigna, F. Mavilio, and E. Bonicelli. 1994. Inhibition of retinoic acid-inducible activation of 3' human *HOXB* genes by antisense oligonucleotides affects sequential activation of genes located upstream in the four *HOX* clusters. *Proc. Natl. Acad. Sci. USA*. 91:5335-5339.
- Friedmann, Y., C.A. Daniel, P. Strickland, and D.W. Daniel. 1994. *Hox* genes in normal and neoplastic mouse mammary gland. *Cancer Res.* 54:5981-5985.
- Gailit, J., M.P. Welch, and R.A.F. Clark. 1994. TGF- β 1 stimulates expression of keratinocyte integrins during re-epithelialization of cutaneous wounds. *J. Invest. Dermatol.* 103:221-227.
- Goomer, R.S., B.D. Holst, I.C. Wood, F.S. Jones, and G.M. Edelman. 1994. Regulation in vitro of an L-CAM enhancer by homeobox D9 and HNF-1. *Proc. Natl. Acad. Sci. USA*. 91:7985-7989.
- Hatva, E., T. Bohling, J. Jaaskelainen, M. Graziella Perisco, M. Haltia, and K. Alitalo. 1996. Vascular growth factors and receptors in capillary hemangioblastomas and hemangiopericytomas. *Am. J. Pathol.* 148:763-775.
- Immergluck, K., P.A. Lawrence, and M. Bienz. 1990. Induction across germ layers in *Drosophila* mediated by a genetic cascade. *Cell*. 62:261-268.
- Johnson, M.D., H.-R.C. Kim, L. Chesler, G. Tsao-Wu, N. Bouck, and P.J. Polverini. 1994. Inhibition of angiogenesis by tissue inhibitor of metalloproteinase. *J. Cell Physiol.* 160:94-202.
- Kraling, B.M., M.J. Razon, L.M. Boon, D. Zurakowski, C. Seachord, R.P. Darveau, J.B. Mulliken, C.L. Corless, and J. Bischoff. 1996. E-selectin is present in proliferating endothelial cells in human hemangiomas. *Am. J. Pathol.* 148:1181-1191.
- Kubota, Y., H.K. Kleinman, G.R. Martin, and T.J. Lawley. 1988. Role of laminin and basement membrane in the morphological differentiation of human endothelial cells into capillary-like structures. *J. Cell Biol.* 107:1589-1598.
- Lawrence, H.J., and C. Largman. 1992. Homeobox genes in normal hematopoiesis and leukemias. *Blood*. 80:2445-2453.
- Mignatti, P., R. Tsuboi, E. Robbins, and D.B. Rifkin. 1989. In vitro angiogenesis on the human amniotic membrane: requirement for bFGF induced proteinases. *J. Cell Biol.* 108:671-682.
- Min, H.Y., L.V. Doyle, C.R. Vitt, C.L. Zandonella, J.R. Stratton-Thomas, M.A. Shumna, and S. Rosenberg. 1996. Urokinase receptor antagonists inhibit angiogenesis and primary tumor growth in syngeneic mice. *Cancer Res.* 56:2428-2433.
- Montesano, R., M.S. Pepper, U. Mohle-Steinlein, W. Risau, E.F. Wagner, and L. Orci. 1990. Increased proteolytic activity is responsible for the aberrant morphogenetic behavior of endothelial cells expressing the middle T oncogene. *Cell*. 62:435-445.

- Moscattelli, D., M. Presta, and D.B. Rifkin. 1985. Purification of a factor from human placenta that stimulates capillary endothelial cell protease production, DNA synthesis and migration. *Proc. Natl. Acad. Sci. USA.* 83:2091–2095.
- Redline, R.W., P. Hudock, M. MacFee, and P. Patterson. 1994. Expression of AbdB-type homeobox genes in human tumors. *Lab. Invest.* 71:663–670.
- Risau, W. 1995. Differentiation of endothelium. *FASEB J.* 9:26–933.
- Sanger, F., S. Nicklen, and A.R. Coulson. 1977. DNA sequencing with chain terminating inhibitors. *Proc. Natl. Acad. Sci. USA.* 74:5463–5467.
- Savageau, G., U. Thorsteinsdottir, C.J. Eaves, H.J. Lawrence, C. Largman, P.M. Lansdrop, and K.R. Humphries. 1995. Overexpression of *HOXB4* in hematopoietic cells causes the selective expansion of more primitive populations in vitro and in vivo. *Genes Dev.* 9:1753–1765.
- Sepp, N.T., L. Lian-Jie, H.L. Kwang, E.J. Brown, S.W. Caughman, T. Lawley, and R.A. Swerlick. 1994. Basic fibroblast growth factor increases expression of the $\alpha\beta 3$ integrin complex on human microvascular endothelial cells. *J. Invest. Dermatol.* 103:295–299.
- Stoker, A.W., and M.J. Bissell. 1988. Development of avian sarcoma and leukemia virus-based vector packaging cell lines. *J. Virol.* 62:1008–1015.
- Stoker, A.W., C. Hatier, and M.J. Bissell. 1990. The embryonic environment strongly attenuates v-src oncogenesis in mesenchymal and epithelial tissues but not in endothelia. *J. Cell Biol.* 111:217–228.
- Strömblad, S., J.C. Becker, M. Yebra, P.C. Brooks, and D.A. Cheresh. 1996. Suppression of p53 activity and p21^{WAF/CIP1} expression by vascular cell integrin $\alpha\beta 3$ during angiogenesis. *J. Clin. Invest.* 98:426–433.
- Sullivan, L.M., and J.P. Quigley. 1986. An anticatalytic monoclonal antibody to avian plasminogen activator: its effect on behavior of RSV-transformed chick fibroblasts. *Cell.* 45:905–915.
- Takahashi, K., J.B. Mulliken, H.P. Kozakewich, R.A. Rogers, J. Folkman, and R.A. Ezekowitz. 1994. Cellular markers that distinguish the phases of hemangioma during infancy and childhood. *J. Clin. Invest.* 93:2357–2364.
- Takeshita, K., J.A. Bollekens, N. Hijiya, M. Ratajczak, F.H. Ruddle, and A. Gerwitz. 1993. A homeobox gene of the Antennapedia class is required for human adult erythropoiesis. *Proc. Natl. Acad. Sci. USA.* 90:3535–3538.
- Taniguchi, Y., N. Komatsu, and T. Moriuchi. 1995. Overexpression of the *HOXA4* (*HOXD3*) homeobox gene in human erythroleukemia HEL cells results in altered adhesive properties. *Blood.* 85:2786–2794.
- Wang, W., W. Wei, T. Desai, D.C. Ward, and S.J. Kaufmann. 1995. Localization of the $\alpha 7$ integrin gene on human chromosome 12q13: clustering of integrin and Hox genes implies parallel evolution of these gene families. *Genomics.* 26:563–570.